

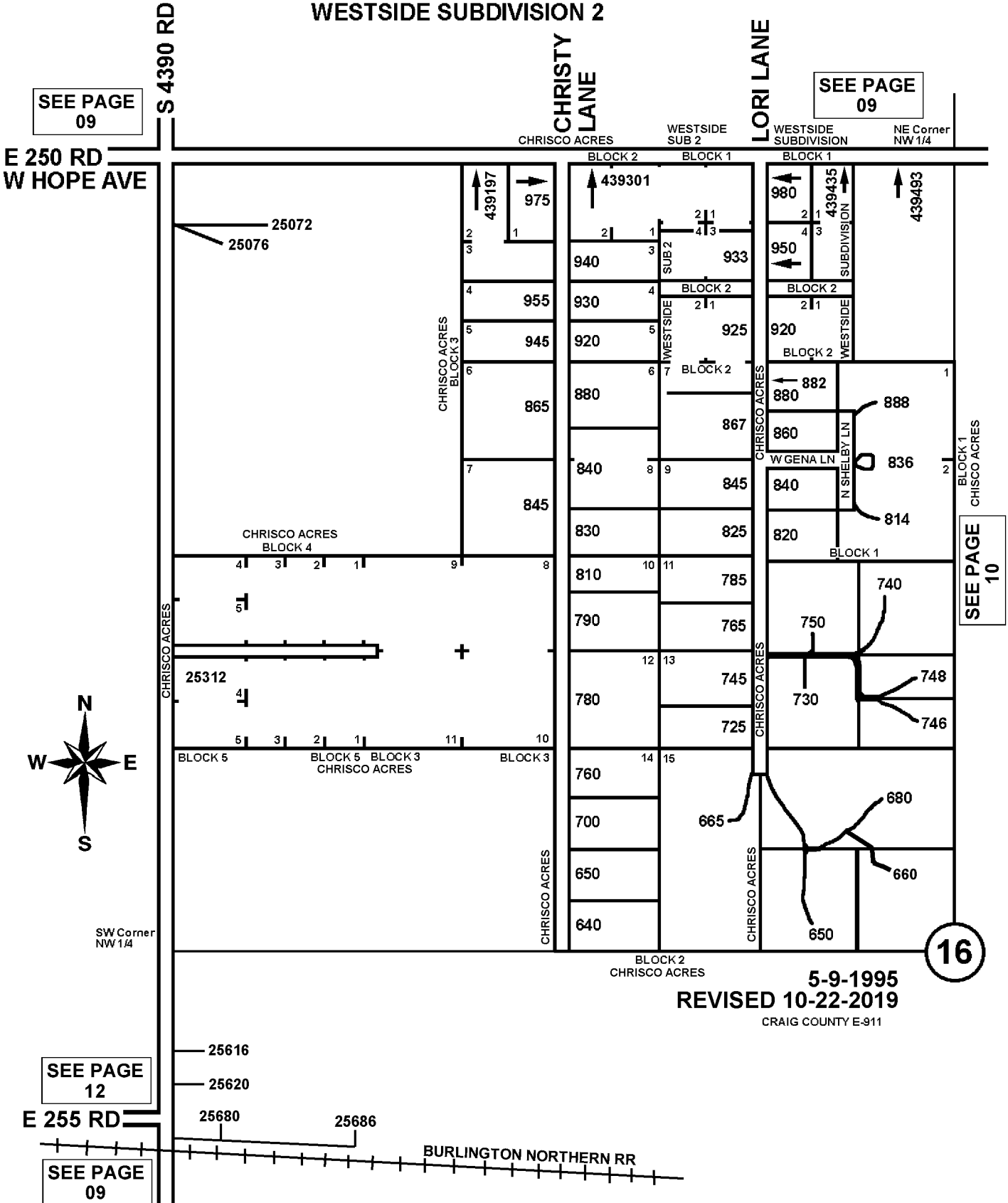
T25N - R20E

13

SECTION 16

CRAIG COUNTY, OKLAHOMA

CHRISCO ACRES SUBDIVISION
WESTSIDE SUBDIVISION
WESTSIDE SUBDIVISION 2



SEE PAGE
09

E 250 RD
W HOPE AVE

SEE PAGE
09

CHRISTY
LANE
CHRISCO ACRES
WESTSIDE
SUB 2

LORI LANE
WESTSIDE
SUBDIVISION
NE Corner
NW 1/4

S 4390 RD

CHRISCO ACRES

CHRISCO ACRES

CHRISCO ACRES

CHRISCO ACRES

CHRISCO ACRES

CHRISCO ACRES

CHRISCO ACRES

CHRISCO ACRES

CHRISCO ACRES

CHRISCO ACRES



SW Corner
NW 1/4

SEE PAGE
12

E 255 RD

SEE PAGE
09

BURLINGTON NORTHERN RR

5-9-1995
REVISED 10-22-2019

CRAIG COUNTY E-911

16

SEE PAGE
10