

T24N - R21E

40A6

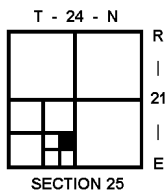
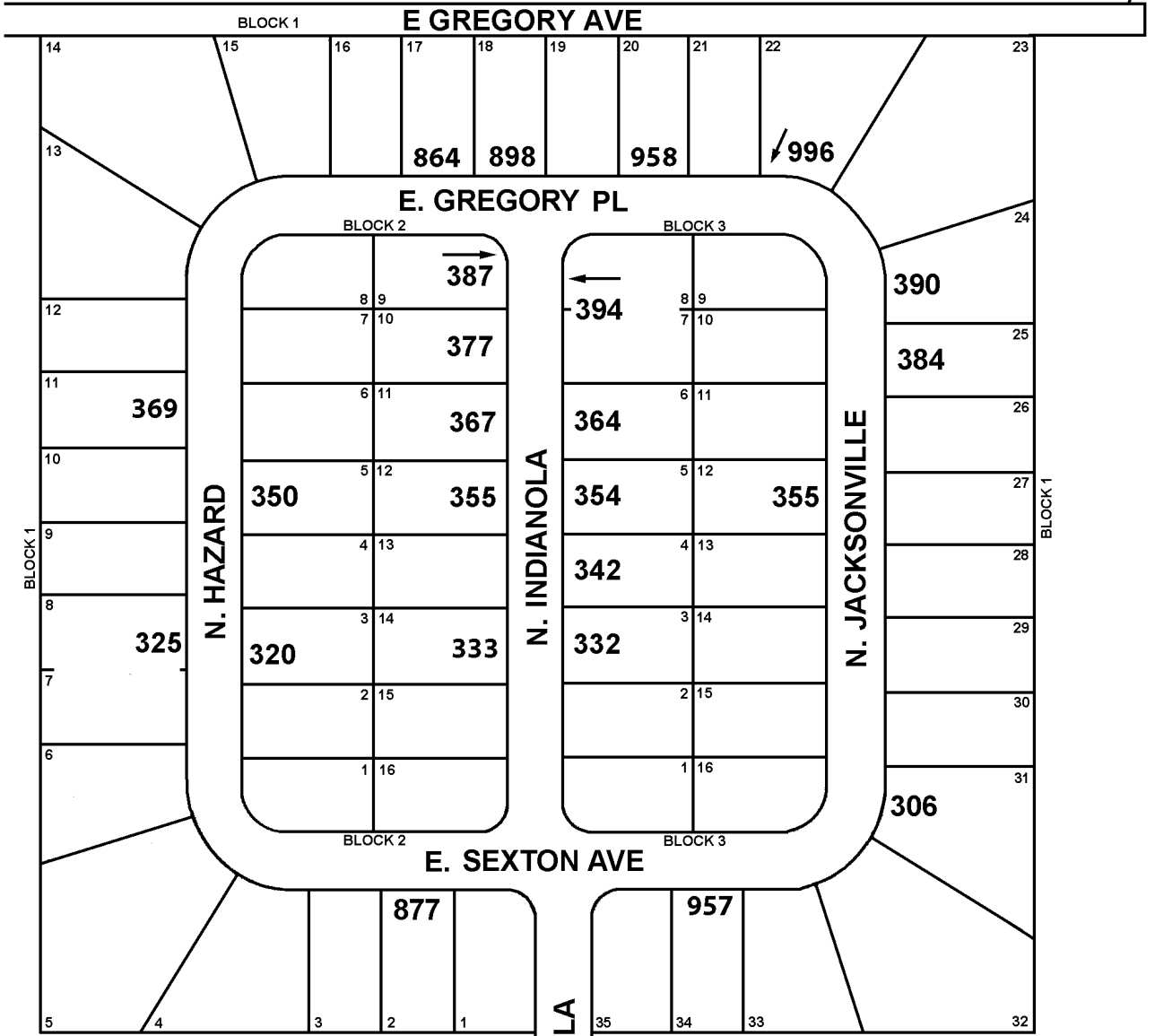
SECTION 36

CRAIG COUNTY, OKLAHOMA

LANTERN'S INN

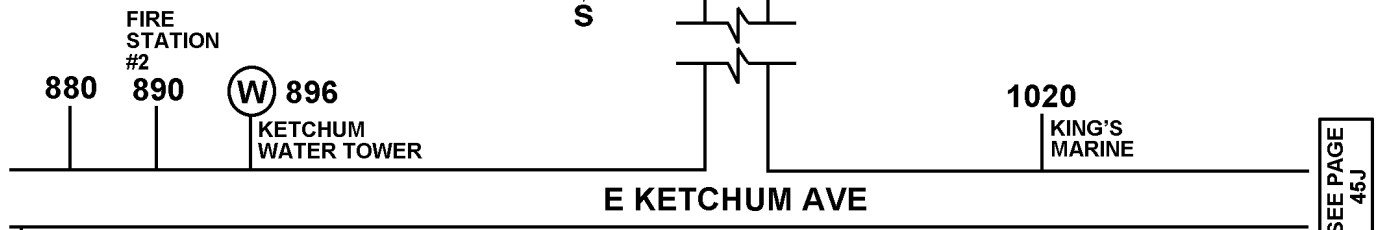
998

SEE PAGE 40A4



6-17-2006
 REVISED 12-14-2021
 CRAIG COUNTY E-911

SEE PAGE 40B



SEE PAGE 40A4

SEE PAGE 45J