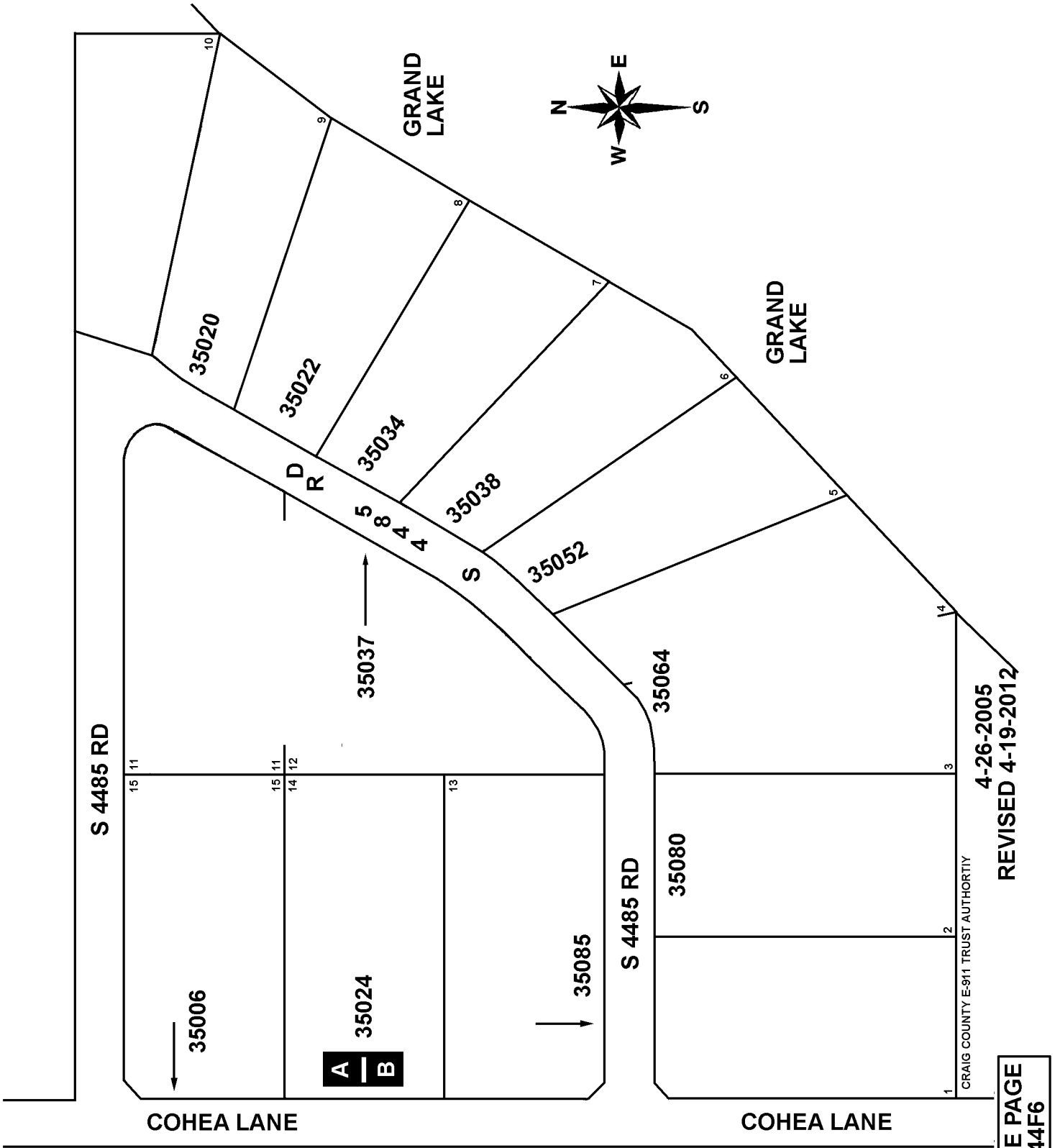


T23N - R21E
SECTION 01
MAYES COUNTY, OKLAHOMA
COHEA POINT 1ST ADDITION

44F6.1



CRAIG CO
MAYES CO

SEE PAGE
44F6

4-26-2005
REVISED 4-19-2012

CRAIG COUNTY E-911 TRUST AUTHORITY