

T24N - R22E

SECTION 11

DELAWARE COUNTY, OKLAHOMA

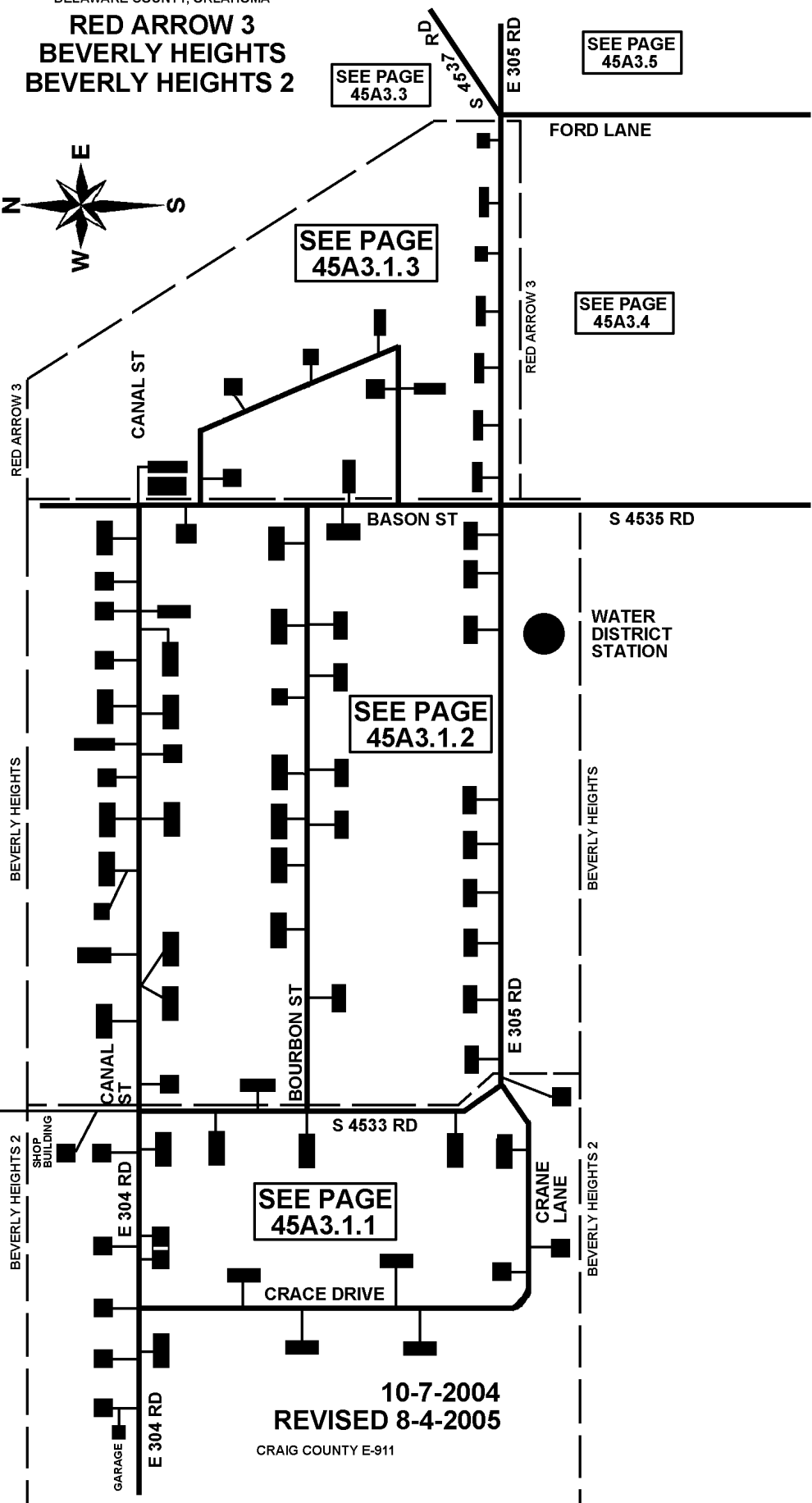
RED ARROW 3 BEVERLY HEIGHTS BEVERLY HEIGHTS 2

45A3.1



GRAND LAKE

GRAND LAKE



SEE PAGE
45A3.1.1

SEE PAGE
45A3.1.2

SEE PAGE
45A3.1.3

SEE PAGE
45A3.3

SEE PAGE
45A3.4

SEE PAGE
45A3.5

10-7-2004
REVISED 8-4-2005

CRAIG COUNTY E-911