

T24N - R22E

SECTION 14

DELAWARE COUNTY, OKLAHOMA

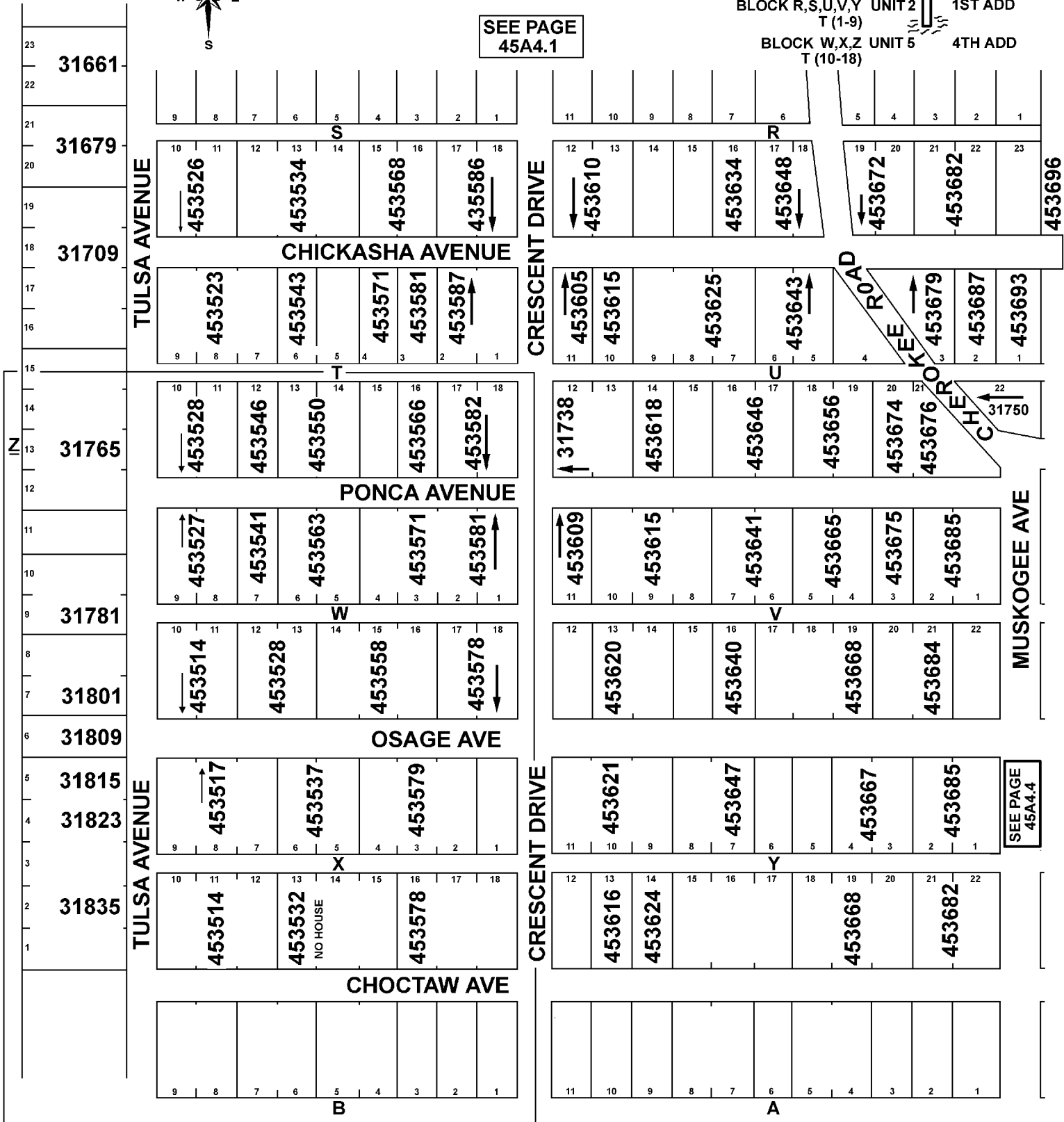
45A4.3



BLOCK R,S,U,V,Y UNIT 2 1ST ADD
T (1-9)

BLOCK W,X,Z UNIT 5 4TH ADD
T (10-18)

SEE PAGE
45A4.1



WOODLAND SHORES 5, 4TH ADDITION

WOODLAND SHORES 2, 1ST ADDITION

SEE PAGE
45A4.5

4-9-2003
REVISED 1-28-2022
CRAIG COUNTY E-911

SEE PAGE
45A4.4