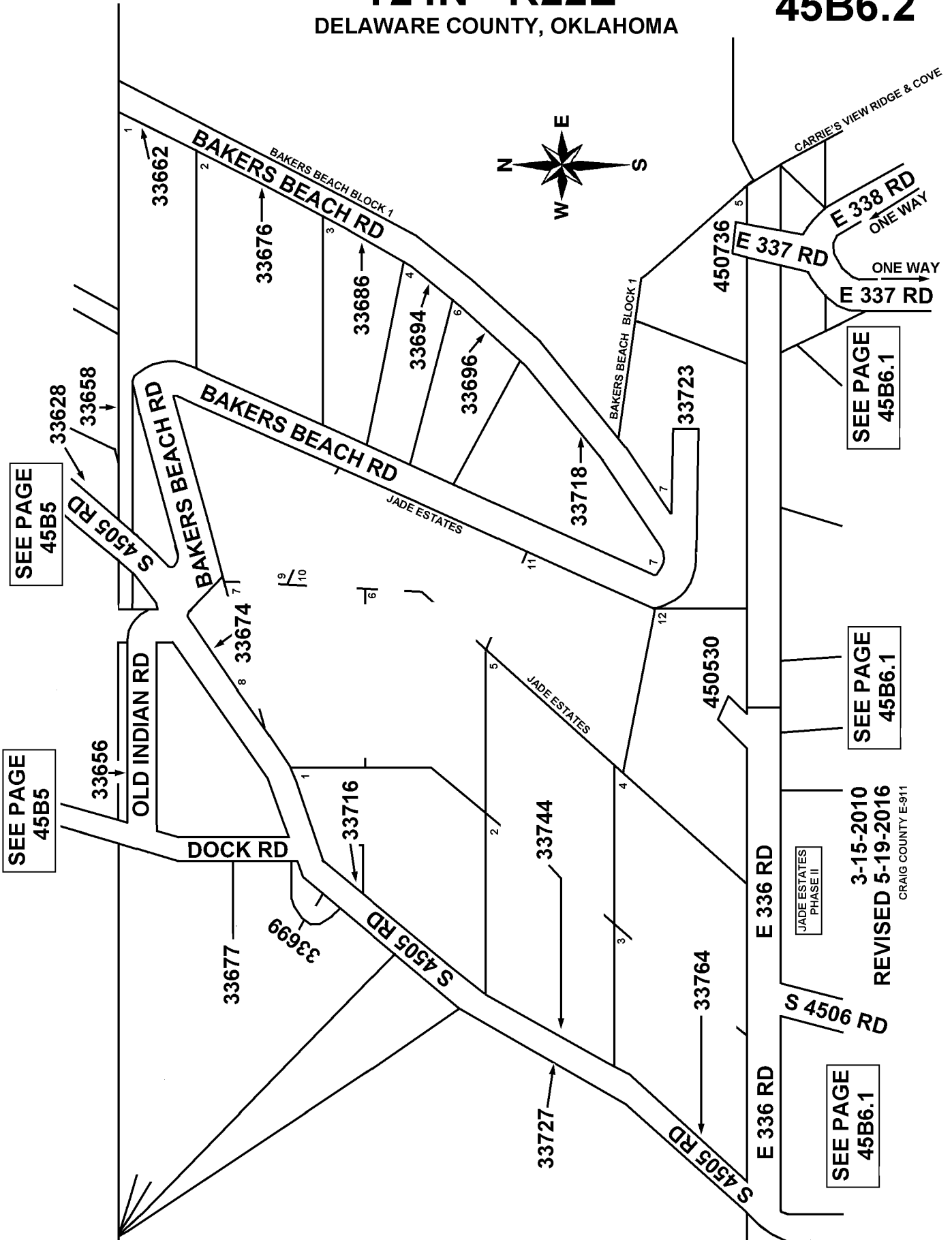


**T24N - R22E**  
DELAWARE COUNTY, OKLAHOMA

**45B6.2**



SEE PAGE  
45B5

SEE PAGE  
45B5

SEE PAGE  
45B6.1

SEE PAGE  
45B6.1

SEE PAGE  
45B6.1

3-15-2010  
REVISED 5-19-2016  
CRAIG COUNTY E-911

JADE ESTATES  
PHASE II