

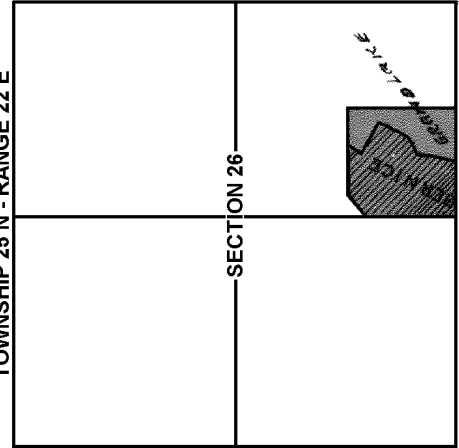
# T25N - R22E

# 45C17

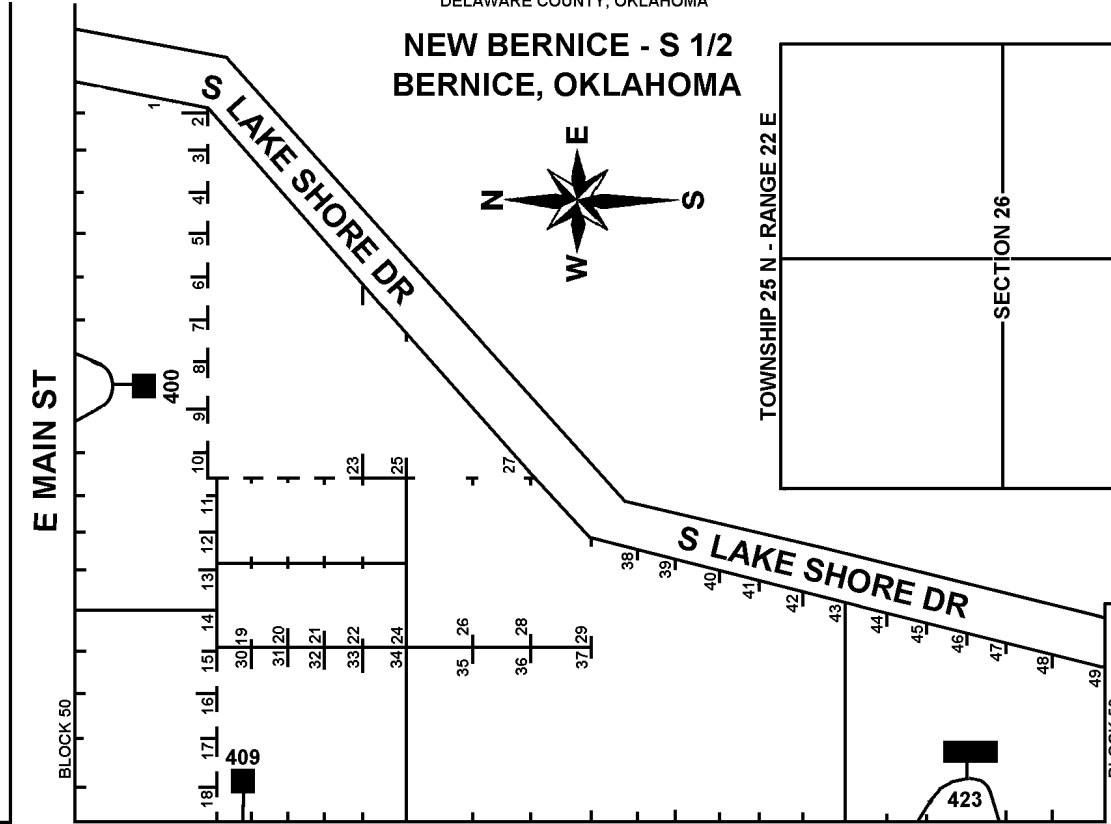
## SECTION 26

DELAWARE COUNTY, OKLAHOMA

### NEW BERNICE - S 1/2 BERNICE, OKLAHOMA



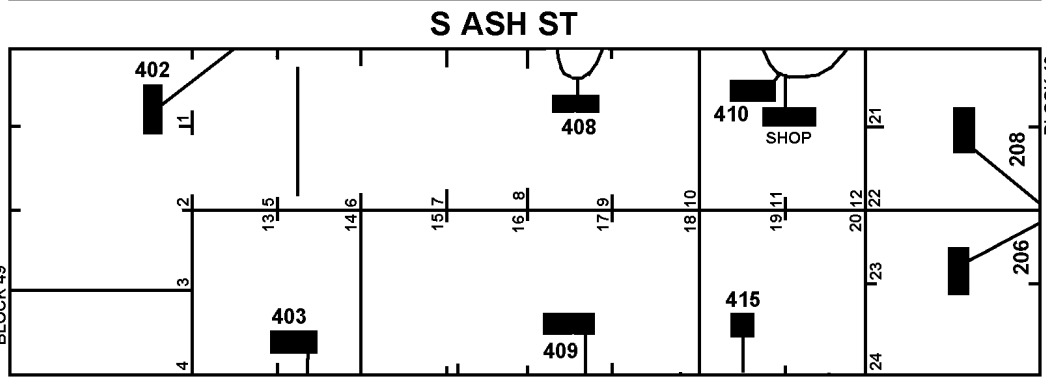
SEE PAGE  
45C19A



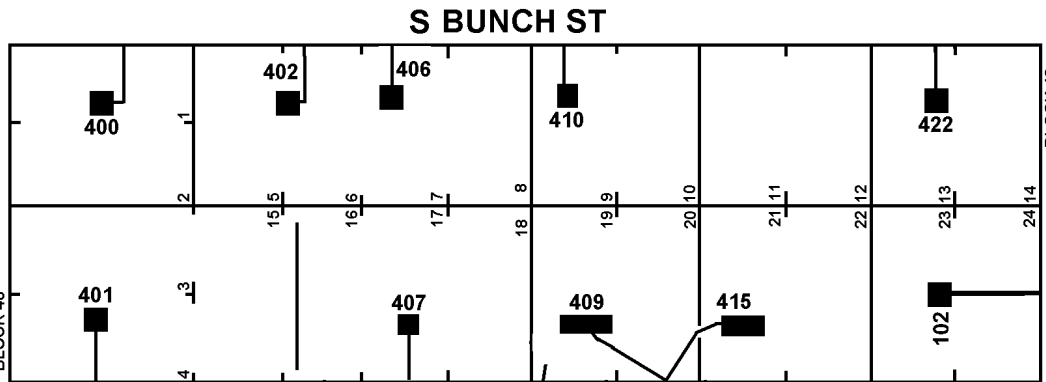
SEE PAGE  
45C19

SEE PAGE  
45C19

SEE PAGE  
45C19



SEE PAGE  
45C18



SEE PAGE  
45C16

SEE PAGE  
45C16

BLOCK 50  
E BERNICE DR

BLOCK 49  
S JOHN DR

BLOCK 48  
E BERNICE DR

W E

S 4535 RD

CRAIG COUNTY E-911  
5-14-2010  
REVISED 3-19-2015