

T25N - R22E

45C7

SECTIONS 23 & 26

DELAWARE COUNTY, OKLAHOMA

SECOND LAKEVIEW ADDITION

BERNICE, OKLAHOMA

SEE PAGE
45C5

DELAWARE COUNTY
—OKLAHOMA—

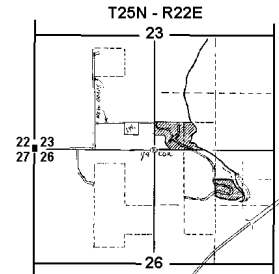
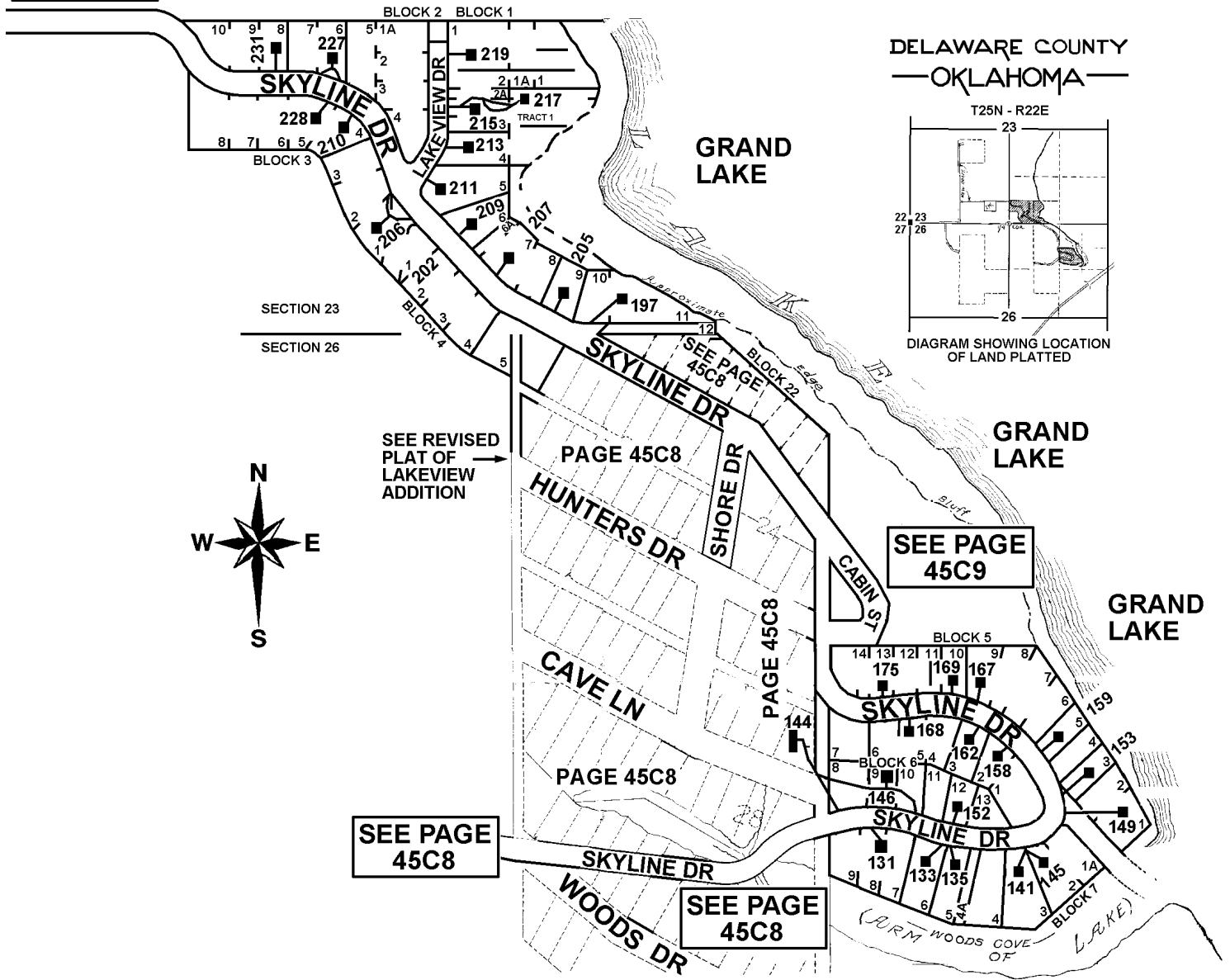


DIAGRAM SHOWING LOCATION
OF LAND PLATTED



3-23-2010
REVISED 3-29-2021
CRAIG COUNTY E-911