

# T25N - R22E

# 45C8

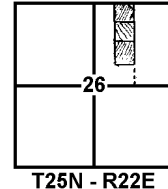
## SECTION 26

DELAWARE COUNTY, OKLAHOMA

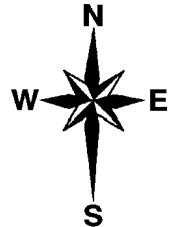
## LAKEVIEW ADDITION

BERNICE, OKLAHOMA

SEE PAGE  
45C7



SEE PAGE  
45C9



SEE PAGE  
45C7

SEE PAGE  
45C6

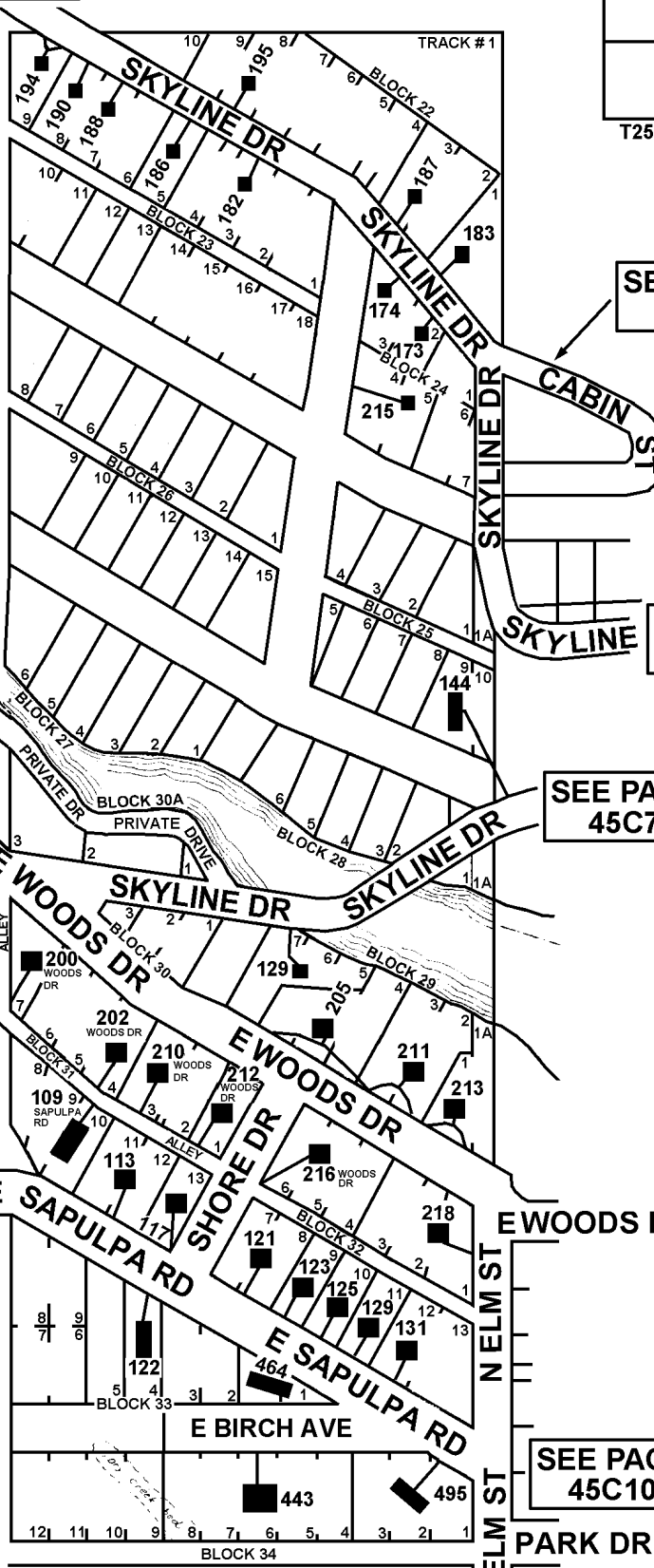
SEE PAGE  
45C7

SEE PAGE  
45C11

SEE PAGE  
45C10

SEE PAGE  
45C10

SEE PAGE  
45C21



3-29-2010  
REVISED 6-8-2022  
CRAIG COUNTY E-911