

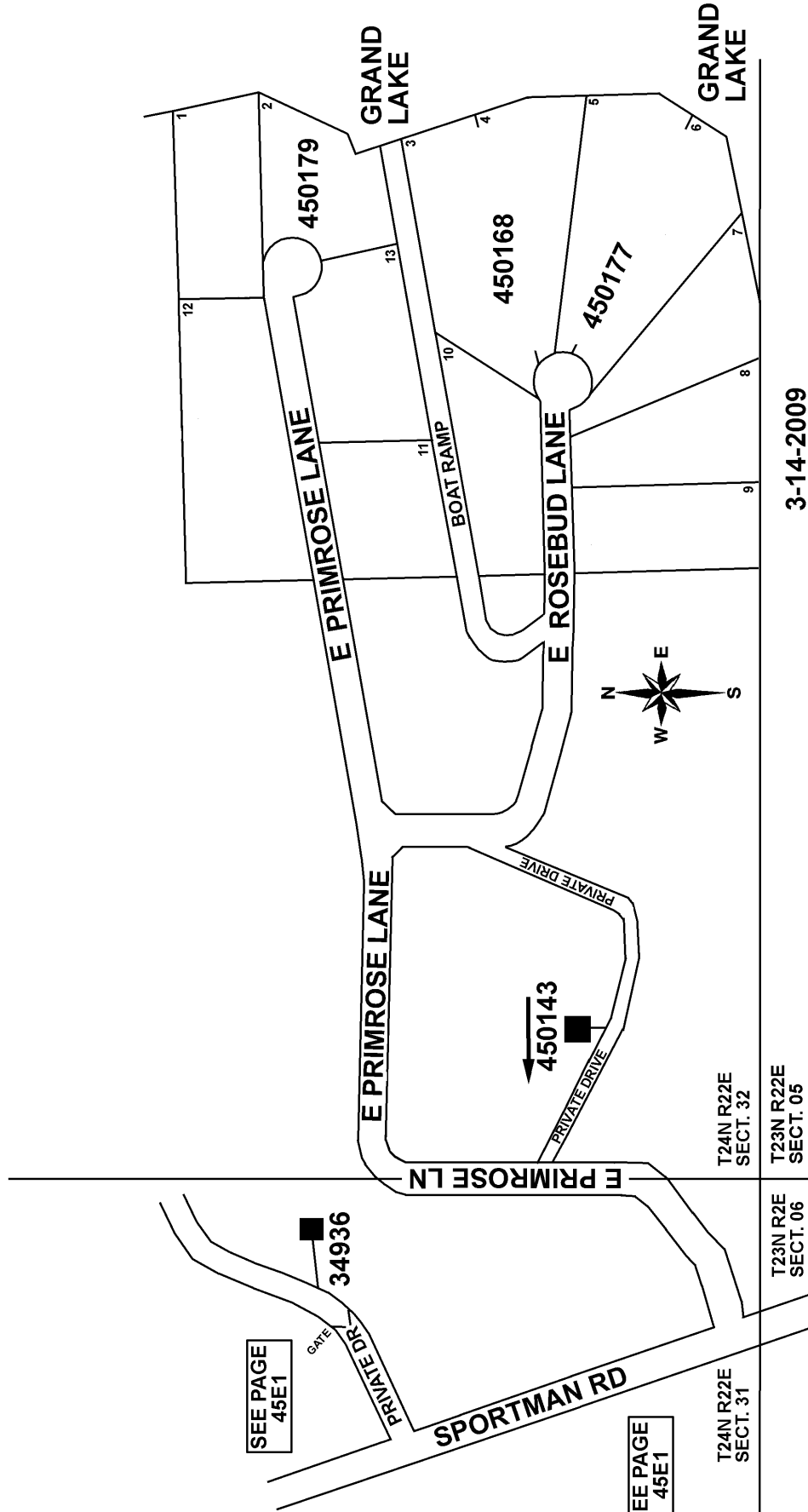
T24N - R22E

SECTION 31 & 32

DELAWARE COUNTY, OKLAHOMA

45E1.1

AMELIA ROSE ESTATES



3-14-2009
REVISED 3-12-2019
CRAIG COUNTY E-911

SEE PAGE
45E1

SEE PAGE
45E1

T24N R22E
SECT. 32

T23N R22E
SECT. 05

T23N R22E
SECT. 06

T24N R22E
SECT. 31