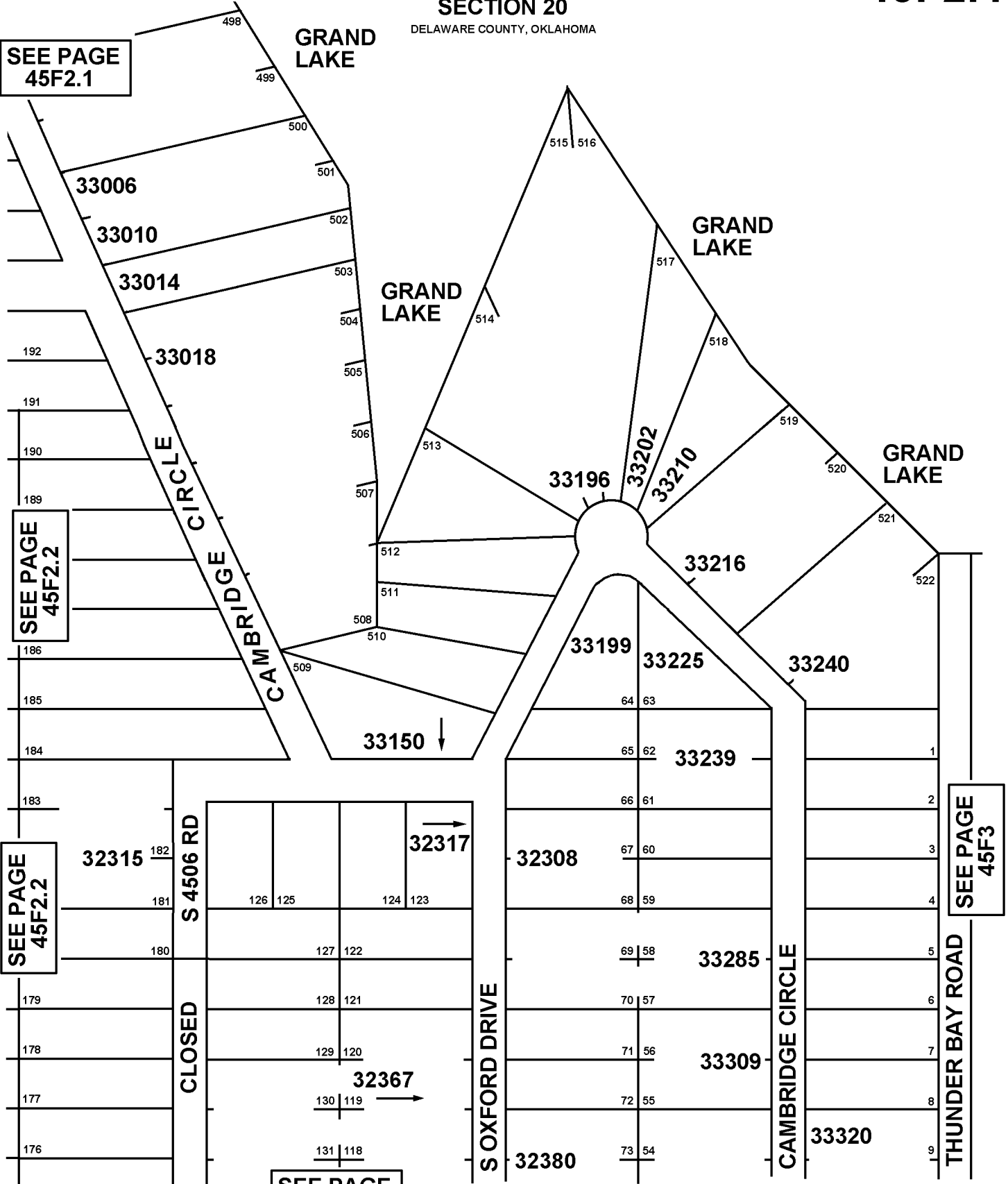


T24N - R22E

SECTION 20

DELAWARE COUNTY, OKLAHOMA

45F2.4



SEE PAGE 45F2.1

SEE PAGE 45F2.2

SEE PAGE 45F2.2

SEE PAGE 45F3

SEE PAGE 45F2.5



7-5-2004
 REVISED 12-1-2022
 CRAIG COUNTY E-911