

T24N - R22E

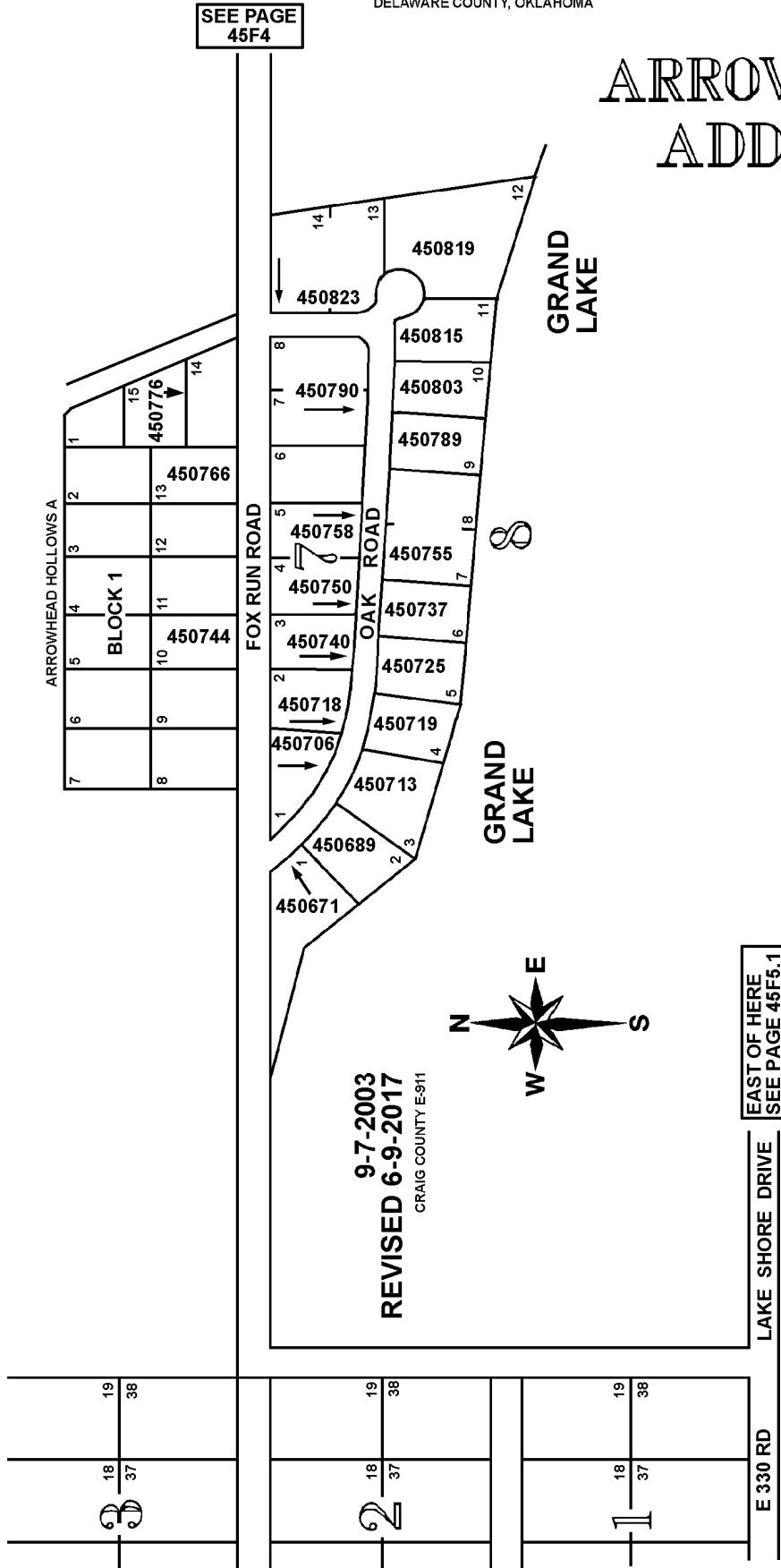
45F5

SECTION 20

DELAWARE COUNTY, OKLAHOMA

SEE PAGE
45F4

ARROWHEAD ADDITION



EAST OF HERE
SEE PAGE 45F5.1

LAKE SHORE DRIVE

E 330 RD

9-7-2003
REVISED 6-9-2017
CRAIG COUNTY E-911



ARROWHEAD HOLLOWSA

5

2

1