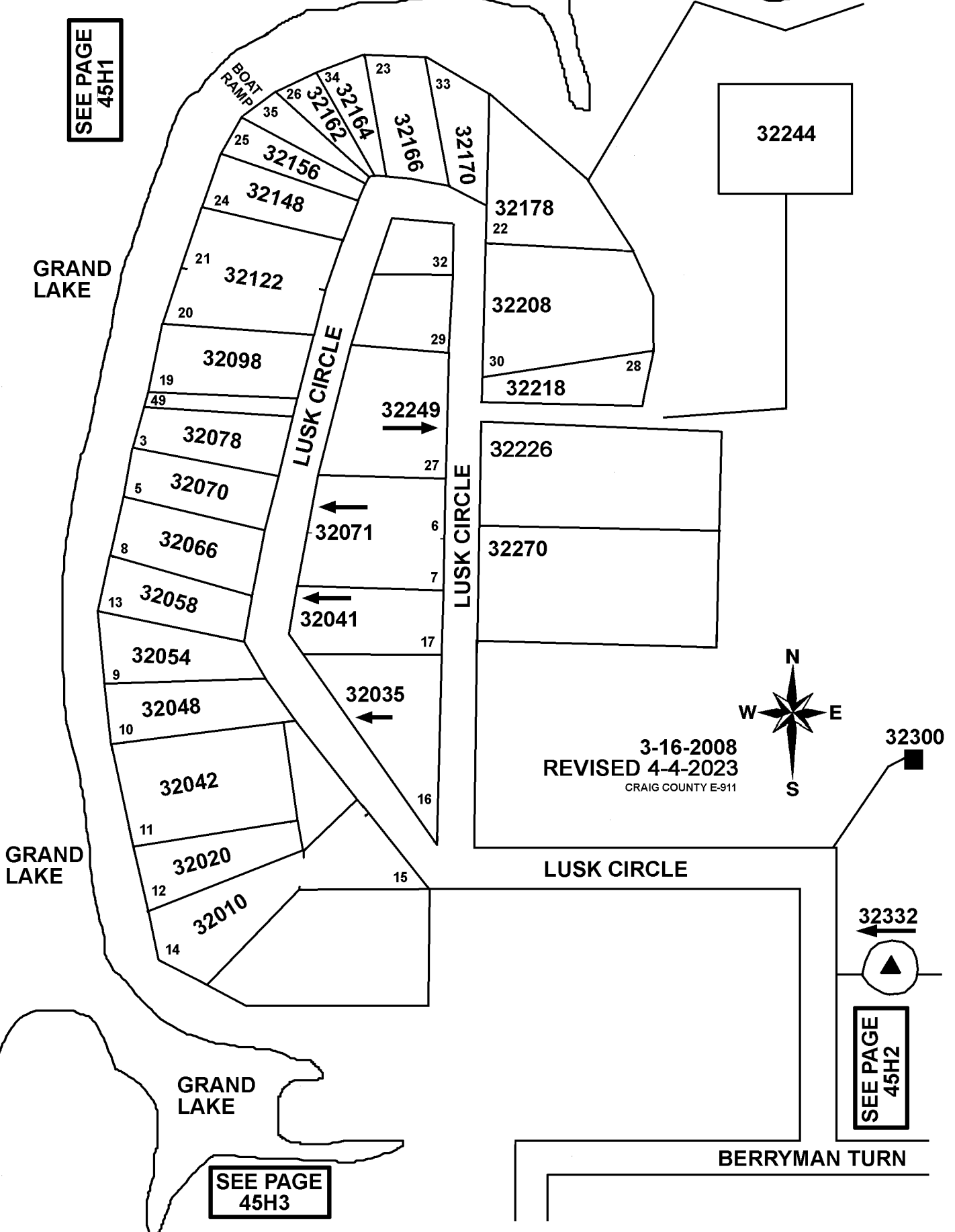


T24N - R22E
SECTION 21
DELAWARE COUNTY, OKLAHOMA

GRAND LAKE

45H2.1

SEE PAGE
45H1



32244

32178
22
32208
30
32218
28

32226
32270

3-16-2008
REVISED 4-4-2023
CRAIG COUNTY E-911



32300

32332

SEE PAGE
45H2

SEE PAGE
45H3

BERRYMAN TURN