

T24N - R22E

SECTION 21

DELAWARE COUNTY, OKLAHOMA
CHEROKEE YACHT CLUB 1
DEER COVE ESTATES

45H3

LUSK
CIRCLE

SEE PAGE
45H2

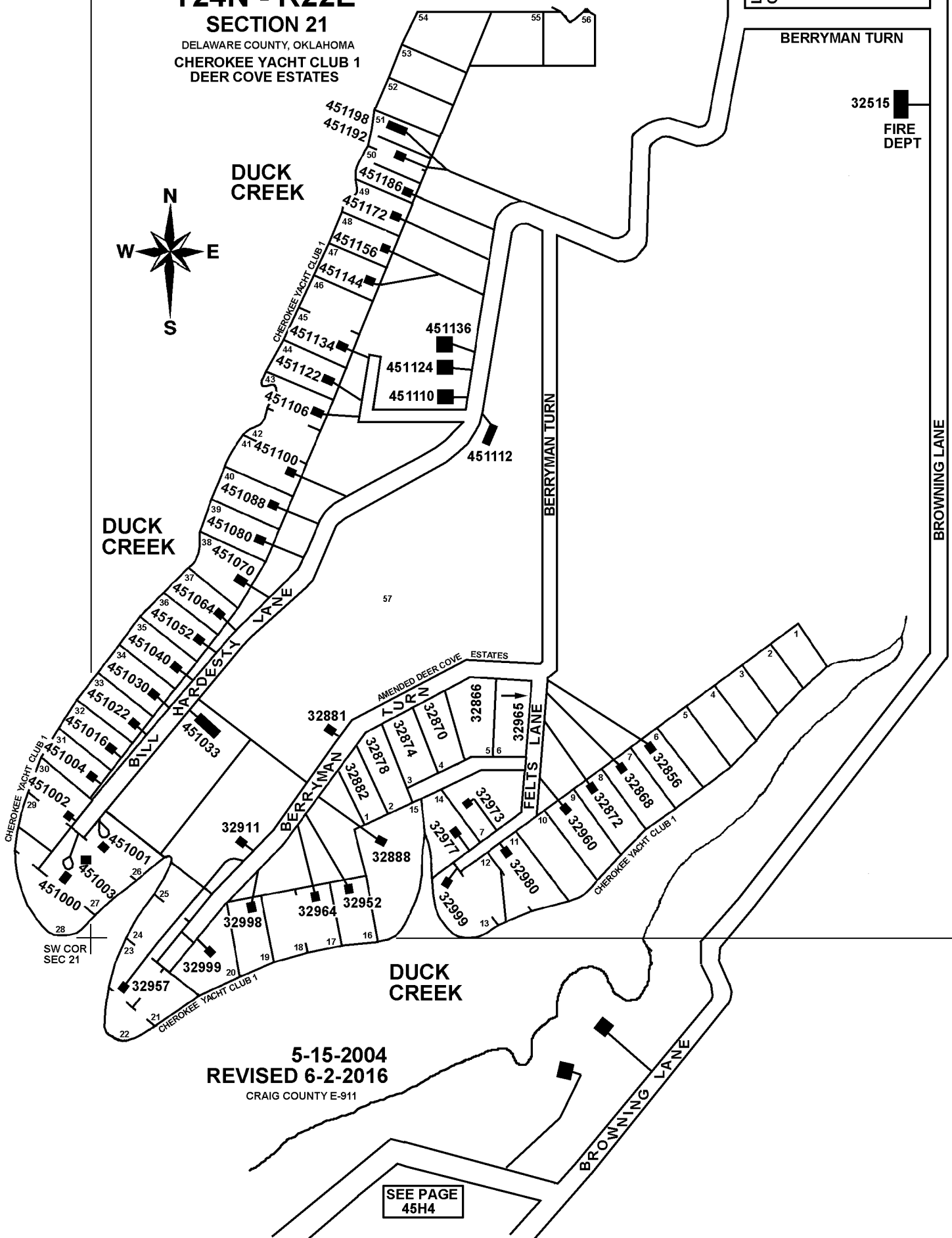
BERRYMAN TURN

32515
FIRE
DEPT



DUCK
CREEK

DUCK
CREEK



57

AMENDED DEER COVE ESTATES

DUCK
CREEK

5-15-2004
REVISED 6-2-2016

CRAIG COUNTY E-911

SEE PAGE
45H4

SW COR
SEC 21

BROWNING LANE

BERRYMAN TURN

HARDESVILLE LANE

BILL LANE

FELTS LANE

BROWNING LANE

CHEROKEE YACHT CLUB 1

CHEROKEE YACHT CLUB 1

CHEROKEE YACHT CLUB 1

CHEROKEE YACHT CLUB 1