

T25N - R20E

SECTION 15 & 16
VINITA, OKLAHOMA



V15

VINITA ORIGINAL TOWN
BLK 19-21 & 29-31

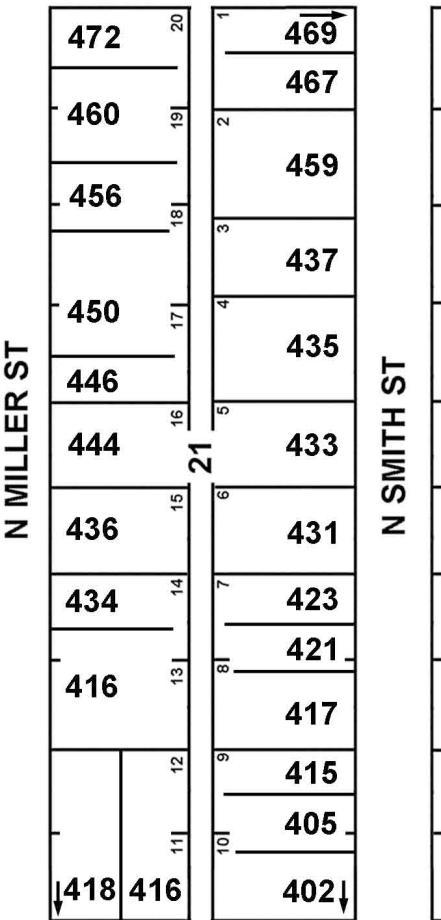
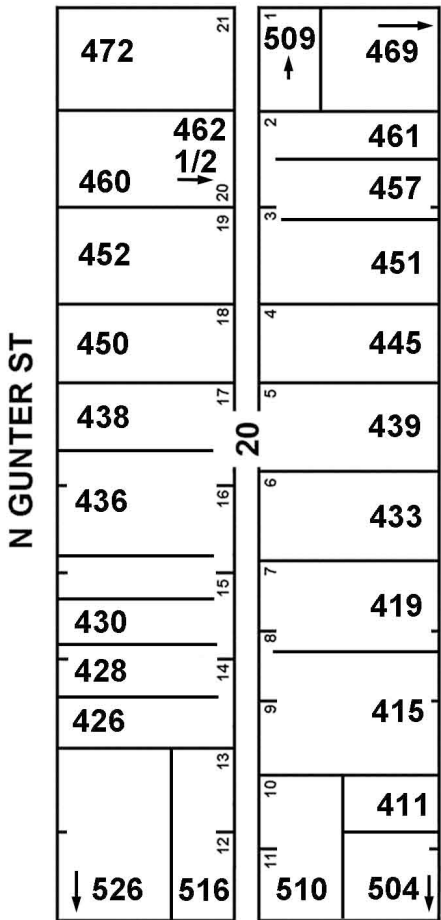
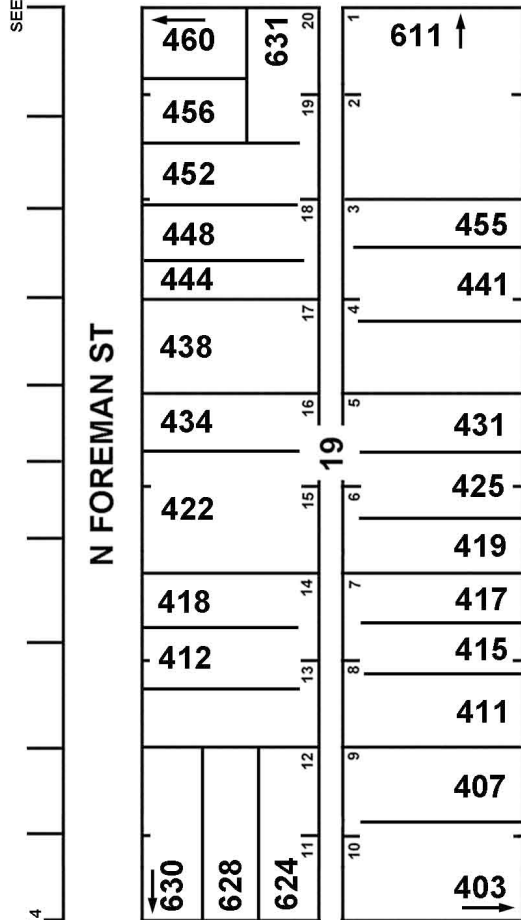
5-1-2015
REVISED 7-12-2016
CRAIG COUNTY E911

SEE PAGE V14 SEE PAGE V8 SEE PAGE V8 SEE PAGE V8 SEE PAGE V8

W NORTH AVE

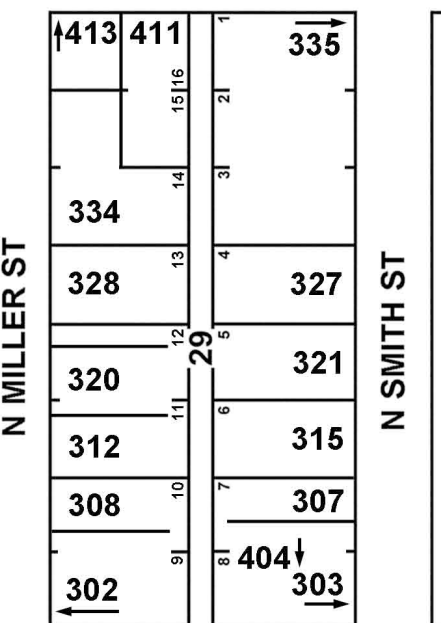
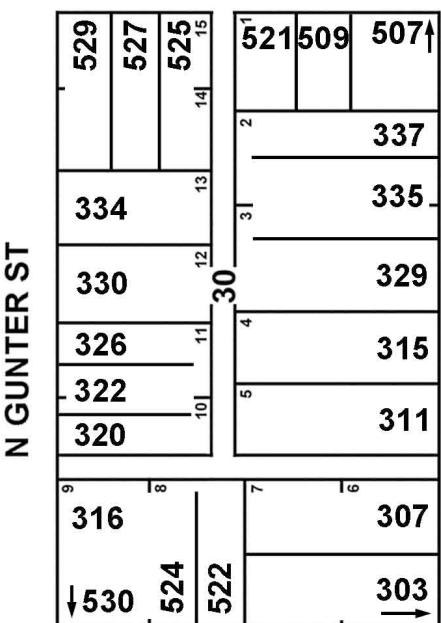
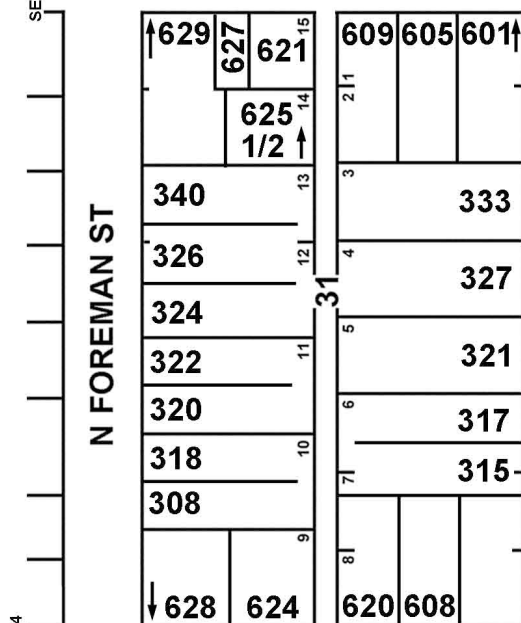
COLLEGE HEIGHTS ADDITION

W NORTH AVE



W TAHLEQUAH AVE

W TAHLEQUAH AVE



W SEQUOYAH AVE

W SEQUOYAH AVE

SEE PAGE V14 SEE PAGE V22 SEE PAGE V22 SEE PAGE V22 SEE PAGE V22