

T24N - R21E

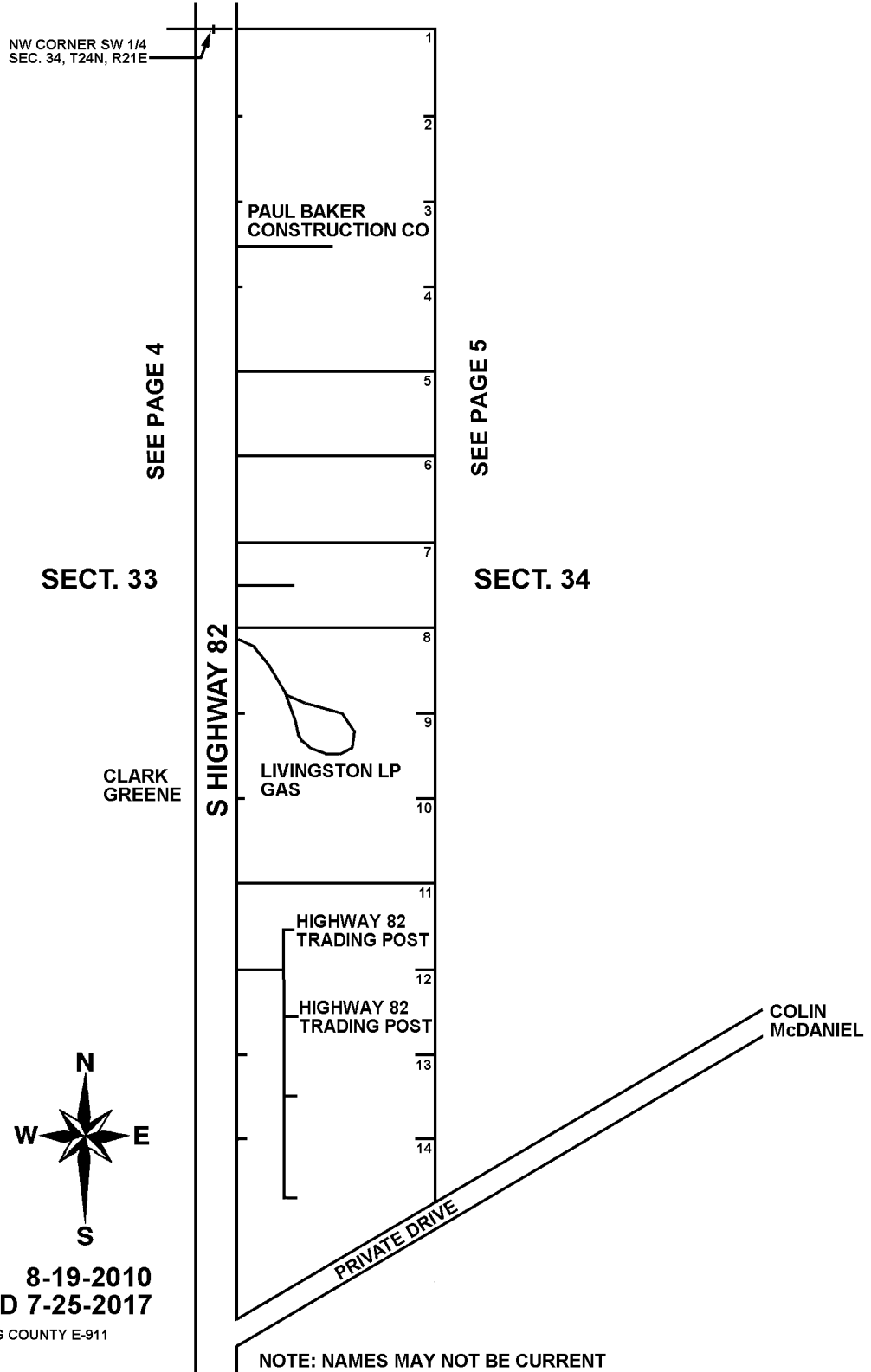
CRAIG COUNTY, OKLA HOMA

GRAND LAKE COMMERCIAL CENTER

5.1

SEE PAGE
5

NW CORNER SW 1/4
SEC. 34, T24N, R21E



8-19-2010
REVISED 7-25-2017

CRAIG COUNTY E-911

NOTE: NAMES MAY NOT BE CURRENT

SEE PAGE
5