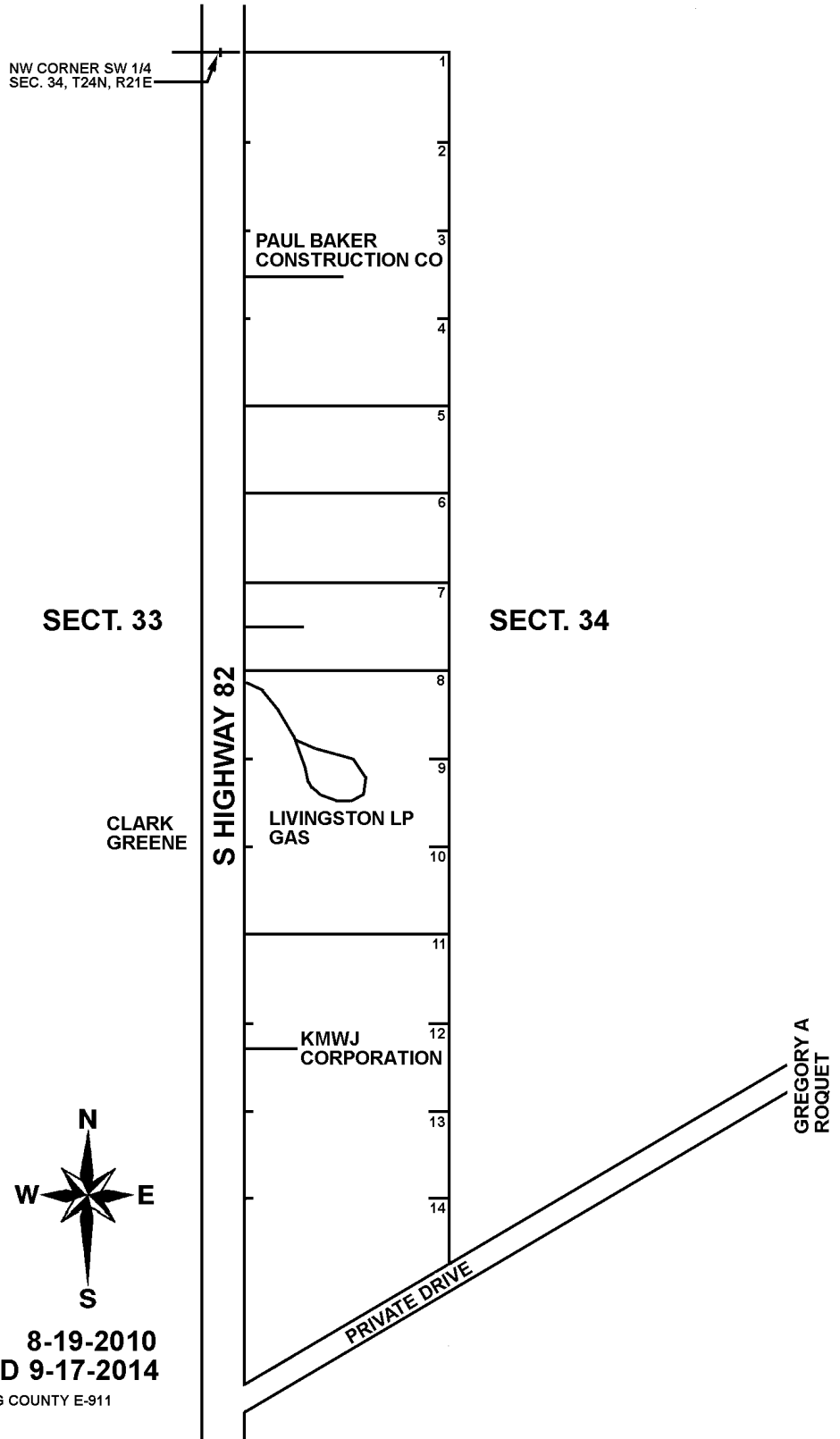


T24N - R21E

CRAIG COUNTY, OKLA HOMA

5.2

GRAND LAKE COMMERCIAL CENTER



NW CORNER SW 1/4
SEC. 34, T24N, R21E

SECT. 33

SECT. 34

S HIGHWAY 82

CLARK
GREENE

LIVINGSTON LP
GAS

KMWJ
CORPORATION

GREGORY A
ROQUET

PRIVATE DRIVE



8-19-2010
REVISED 9-17-2014

CRAIG COUNTY E-911