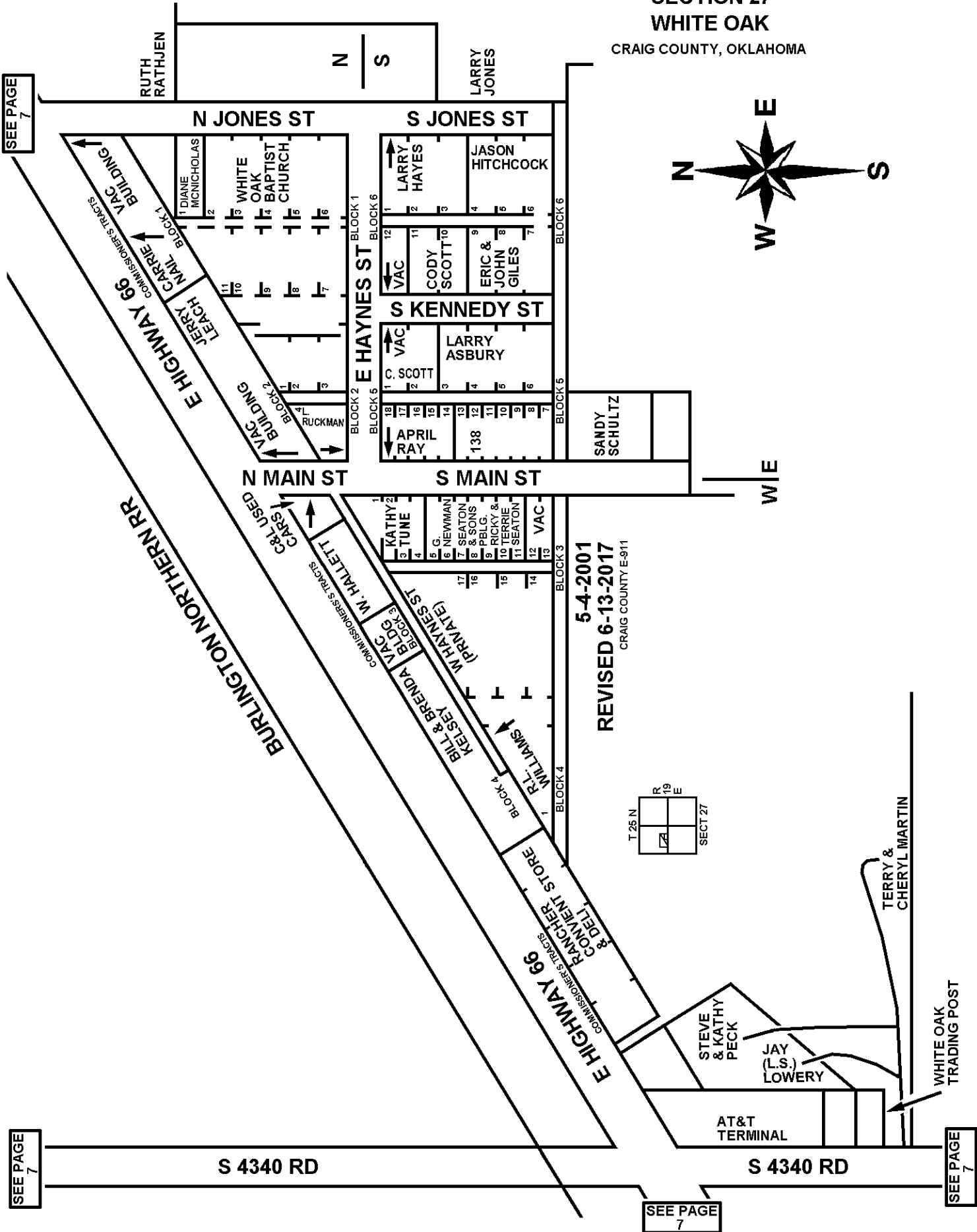


T25N - R19E

SECTION 27

WHITE OAK

CRAIG COUNTY, OKLAHOMA



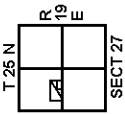
SEE PAGE 7

SEE PAGE 7

SEE PAGE 7

SEE PAGE 7

5-4-2001
REVISED 6-13-2017
CRAIG COUNTY E-911



BURLINGTON NORTHERN RR
HIGHWAY 66
COMMISSIONER'S TRACTS

RUTH RATHJEN

LARRY JONES

N JONES ST

S JONES ST

N MAIN ST

S MAIN ST

E HAYNES ST

W/E

DIANE MICHOLOS
WHITE OAK BAPTIST CHURCH
JERRY MAIL
JERRY LEACH
VAC BUILDING
BLOCK 1
COMMISSIONER'S TRACTS

LARRY HAYES
JASON HITCHCOCK
VAC
CODY SCOTT
ERIC & JOHN GILES
BLOCK 6

LARRY ASBURY
C. SCOTT
BLOCK 6

SANDY SCHULTZ

KATHY TUNE
NEWMAN
SEATON & SONS
PBLG.
RICKY & TERRIE
SEATON
VAC
BLOCK 3

BILL & BRENDA VAC BLDG
W HAYNES ST (PRIVATE)
KELSEY WILLIAMS
BLOCK 4
COMMISSIONER'S TRACTS

RANCHER'S STORE & DELL
HIGHWAY 66
COMMISSIONER'S TRACTS

STEVE & KATHY PECK

JAY (L.S.) LOWERY

AT&T TERMINAL

TERRY & CHERYL MARTIN

WHITE OAK TRADING POST