

T24N - R21E
SECTION 36
CRAIG COUNTY, OKLAHOMA

KETCHUM COVE ADDITION
SID JOHNSON SUBDIVISION
J.E. KETCHUM 2ND SUBDIVISION

COHEA LANE

44F7

SEE PAGE
44F8

347 RD

SEE PAGE
44F9

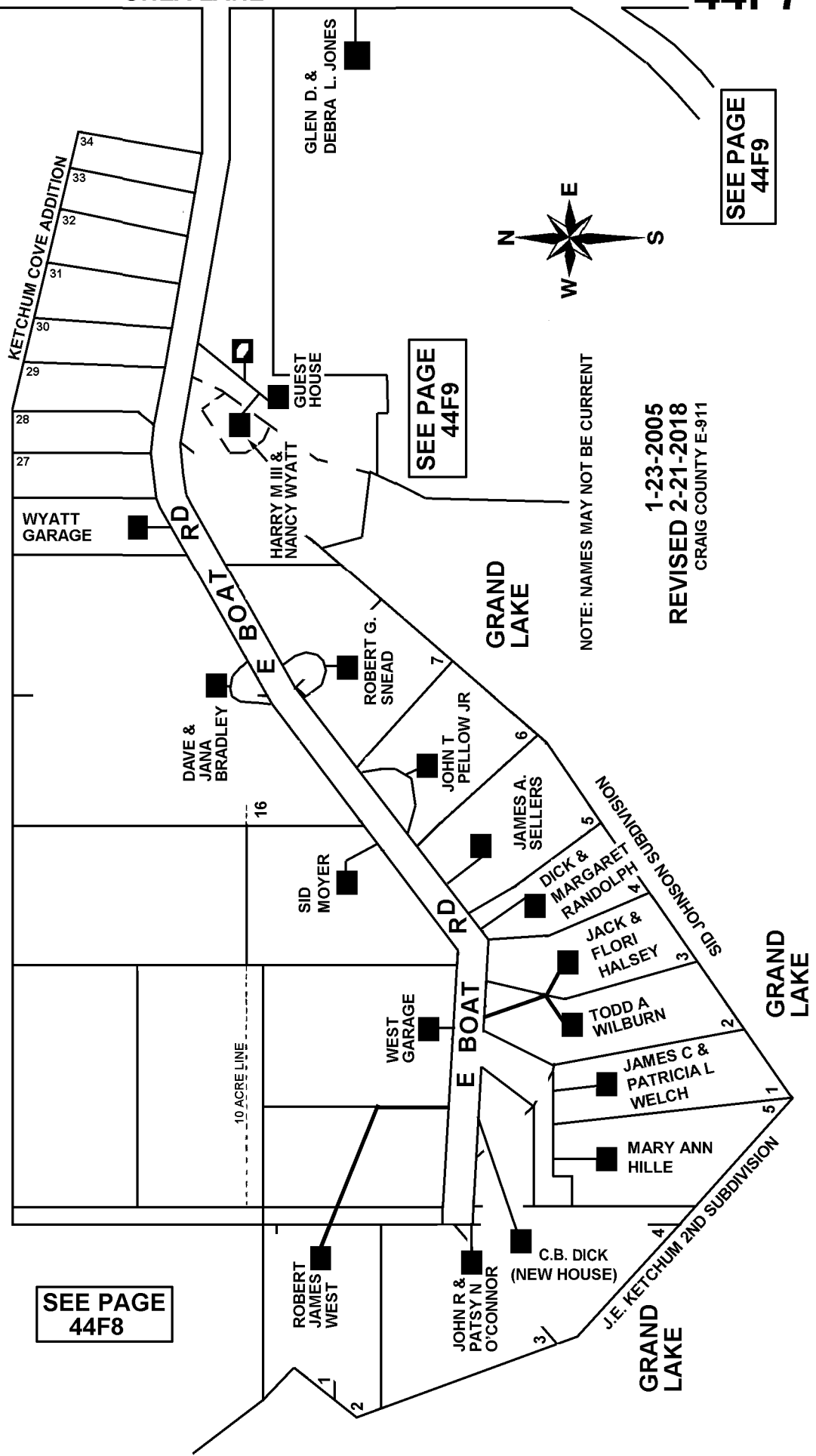
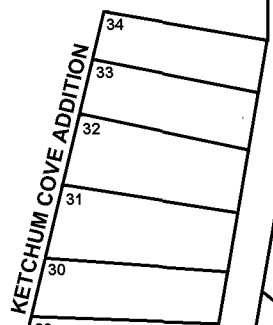
SEE PAGE
44F8

SEE PAGE
44F8

SEE PAGE
44F9

NOTE: NAMES MAY NOT BE CURRENT

1-23-2005
REVISED 2-21-2018
CRAIG COUNTY E-911



GRAND LAKE

GRAND LAKE

GRAND LAKE