

T24N - R22E

SECTION 11

DELAWARE COUNTY, OKLAHOMA

BEVERLY HEIGHTS

45A3.1.2

RED ARROW 3

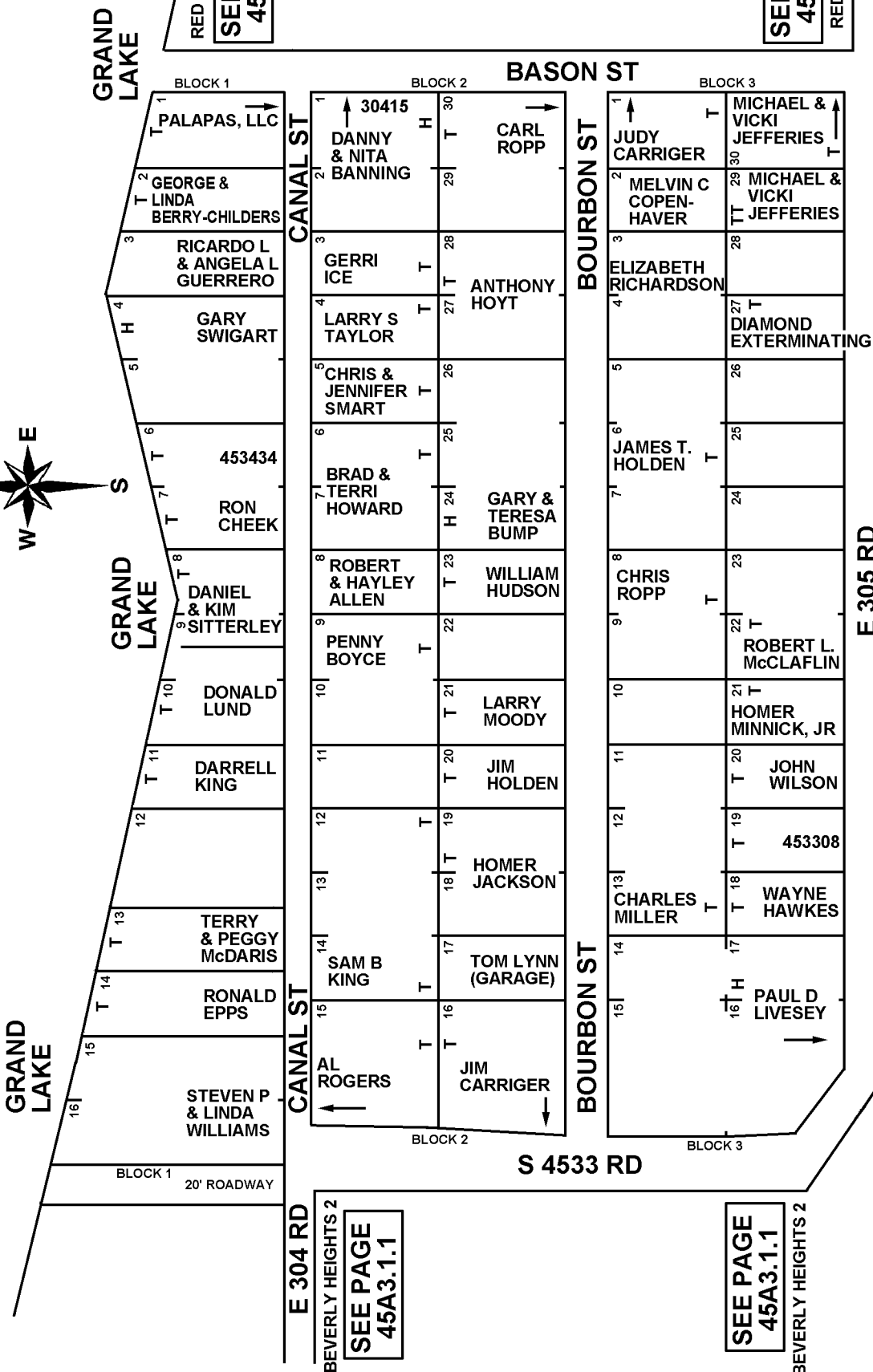
SEE PAGE
45A3.1.3

SEE PAGE
45A3.1.3

RED ARROW 3

CRACE SHORES

SEE PAGE
45A3.4



S 4535 RD

NOTE: NAMES MAY NOT BE CURRENT

E 305 RD

S 4533 RD

E 304 RD

BEVERLY HEIGHTS 2
SEE PAGE
45A3.1.1

SEE PAGE
45A3.1.1

BEVERLY HEIGHTS 2

7-25-2005
REVISED 11-16-2021
CRAIG COUNTY E911