



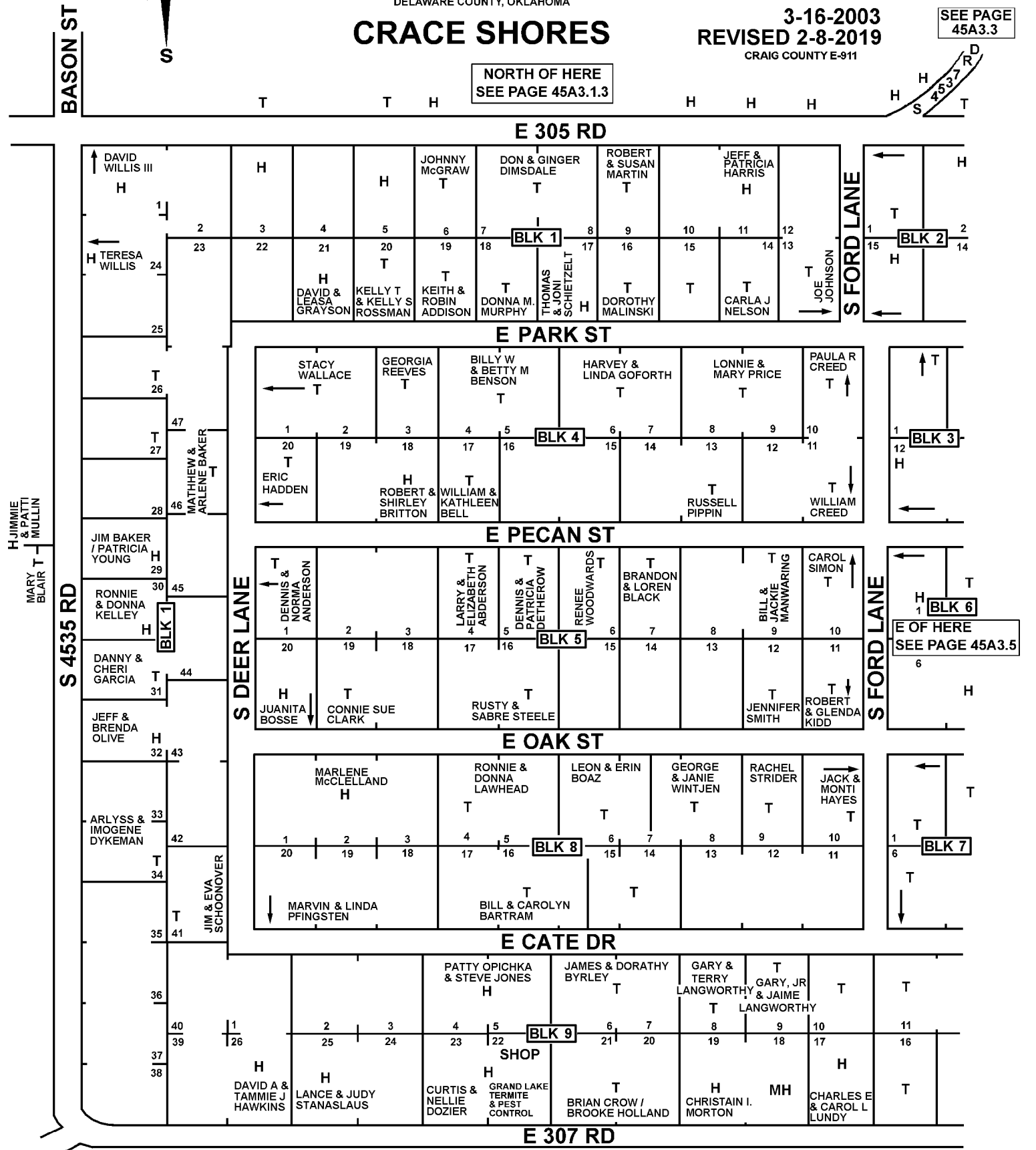
**T24N - R22E**  
**SECTION 11**  
 DELAWARE COUNTY, OKLAHOMA  
**CRACE SHORES**

**45A3.4**

3-16-2003  
 REVISED 2-8-2019  
 CRAIG COUNTY E-911

SEE PAGE  
 45A3.3

NORTH OF HERE  
 SEE PAGE 45A3.1.3



SEE PAGE  
 45A2

MH = MOTOR HOME  
 T = TRAILER HOUSE  
 H = HOUSE

SOUTH OF HERE  
 SEE PAGE 45A5

NOTE: NAMES MAY NOT BE CURRENT