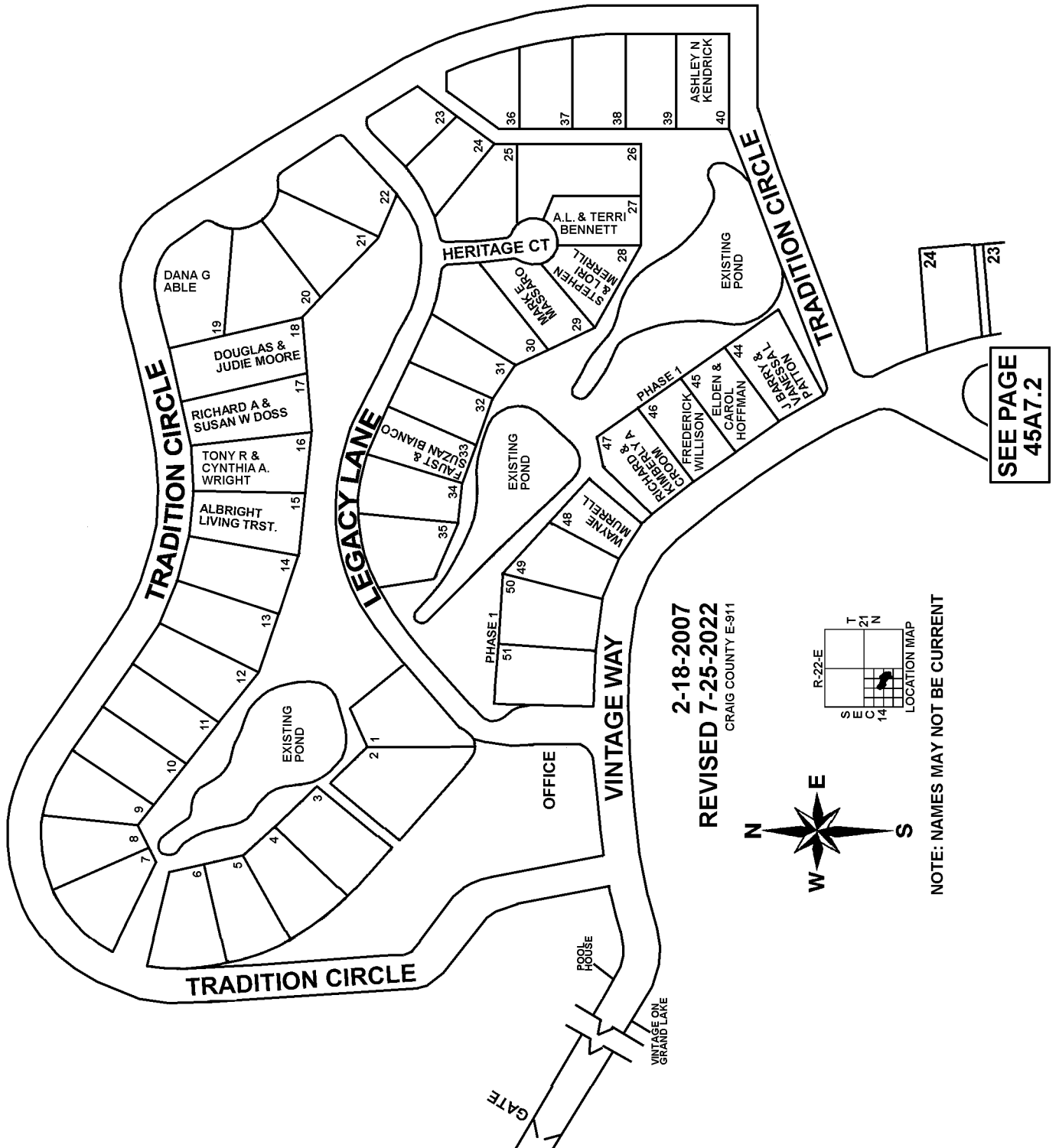


T24N - R22E  
SECTION 14  
DELAWARE COUNTY, OKLAHOMA

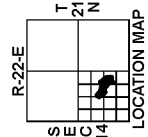
45A7.1

VINTAGE ON GRAND LAKE  
PHASE 2



SEE PAGE  
45A7.2

2-18-2007  
REVISED 7-25-2022  
CRAIG COUNTY E-911



NOTE: NAMES MAY NOT BE CURRENT

S 4530 RD

S 4530 RD