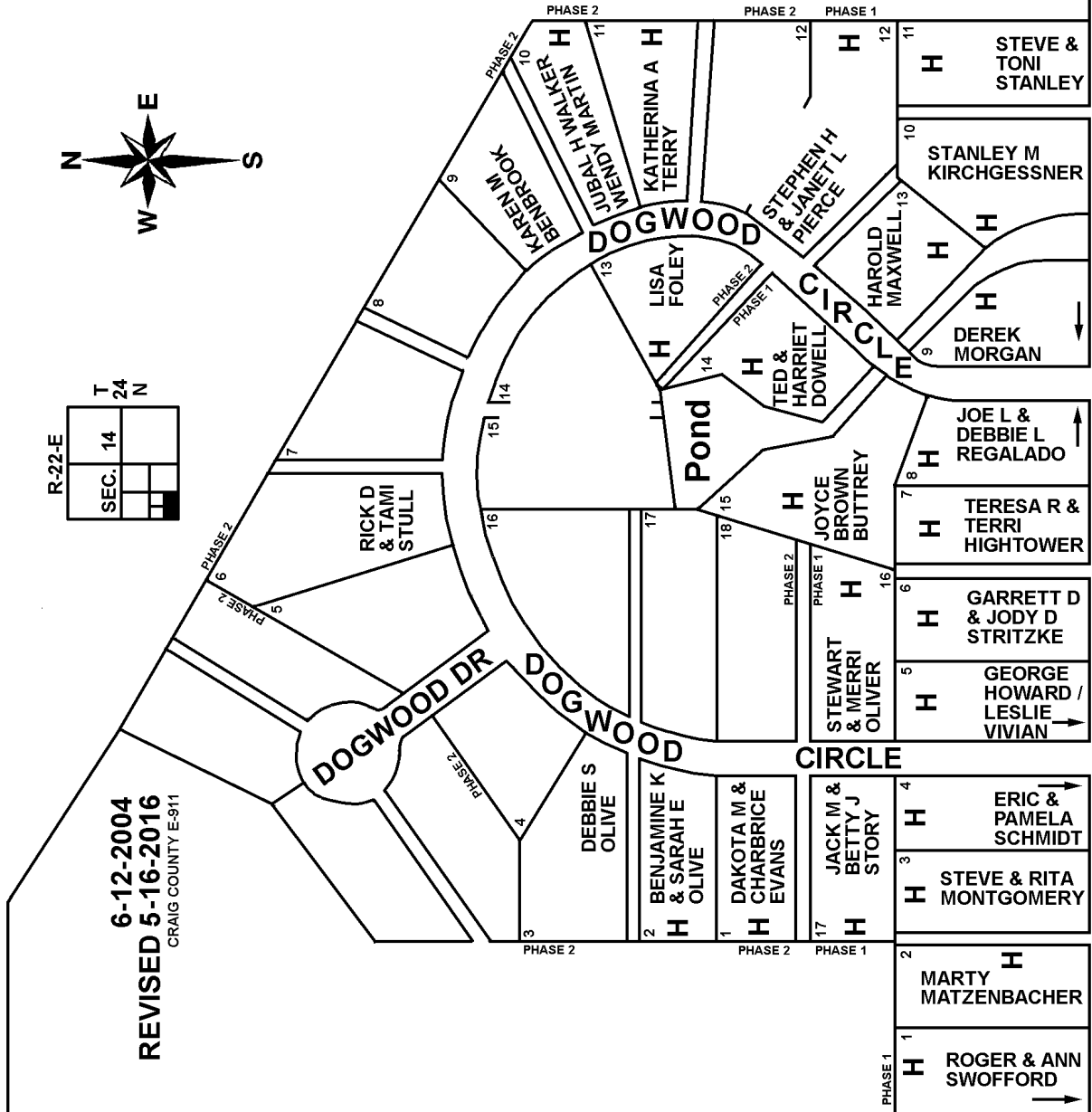
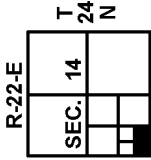


T24N - R22E
SECTION 14
DELAWARE COUNTY, OKLAHOMA
DOGWOOD HOLLOWES

45A8.1



SEE PAGE 45A8.2

NOTE: NAMES MAY NOT BE CURRENT

SEE PAGE 45A8

SEE PAGE 45A8

SEE PAGE 45A6.2

SECTION 15

SECTION 23

S 4530 RD

E 320 RD

E 320 RD

S 4531 RD

S 4531 RD