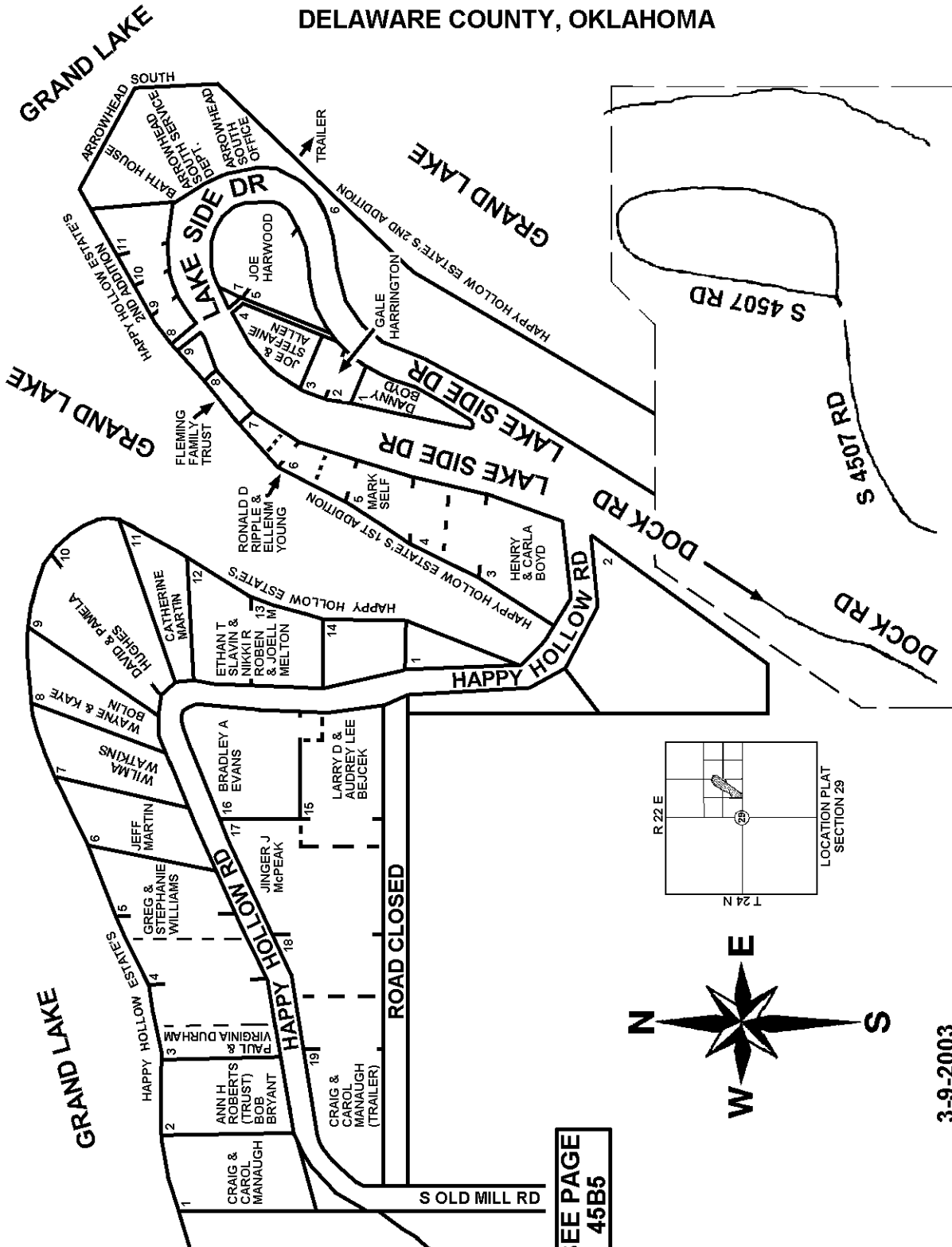


**T25N - R22E**  
**SECTION 29**  
**DELAWARE COUNTY, OKLAHOMA**

**45B7**



**NOTE: NAMES MAY NOT BE CURRENT**

**SEE PAGE 45B5**

**SEE PAGE 45B5**

GARY CUPP

**3-9-2003**  
**REVISED 1-3-2019**  
 CRAIG COUNTY E-911