

T25N - R22E

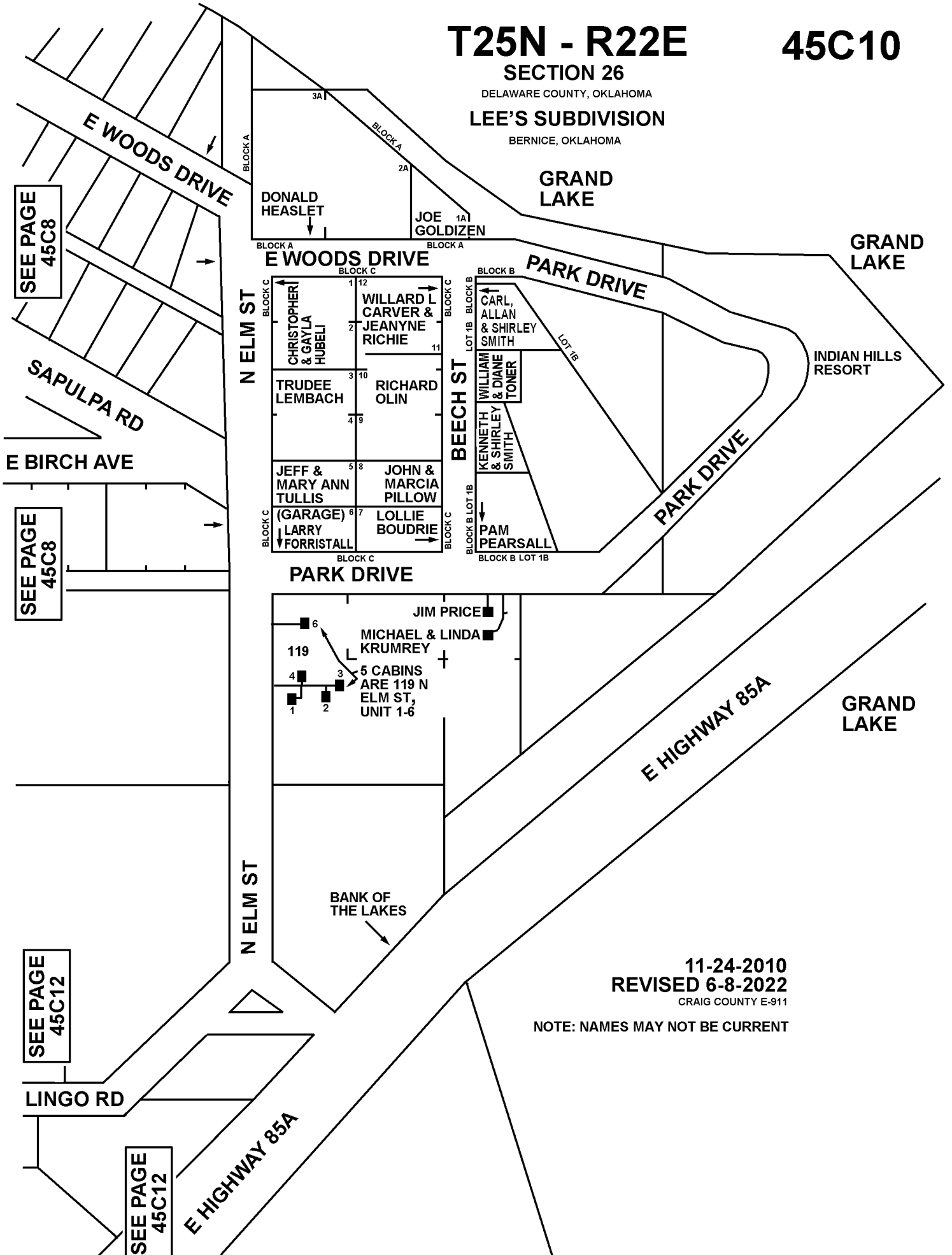
45C10

SECTION 26

DELAWARE COUNTY, OKLAHOMA

LEE'S SUBDIVISION

BERNICE, OKLAHOMA



SEE PAGE
45C8

SEE PAGE
45C8

SEE PAGE
45C12

SEE PAGE
45C12

11-24-2010
REVISED 6-8-2022
CRAIG COUNTY E-911

NOTE: NAMES MAY NOT BE CURRENT