

**T25N - R22E**  
**SECTION 26**  
 DELAWARE COUNTY, OKLAHOMA  
**BUNCH FOURTH ADDITION**  
 BERNICE, OKLAHOMA

**45C15**

JASON ALFARO  
 / BOBBIE ROBERTS

**W THELMA ST**

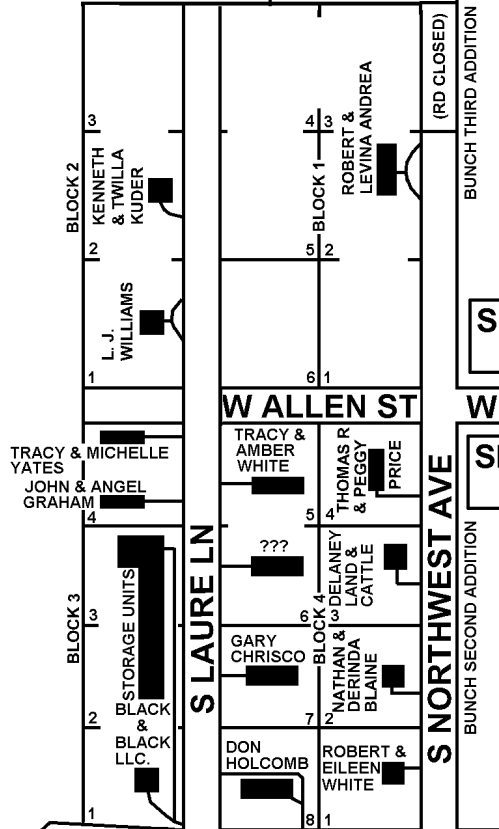
**SEE PAGE  
 45C13**



**SEE PAGE  
 45C13**

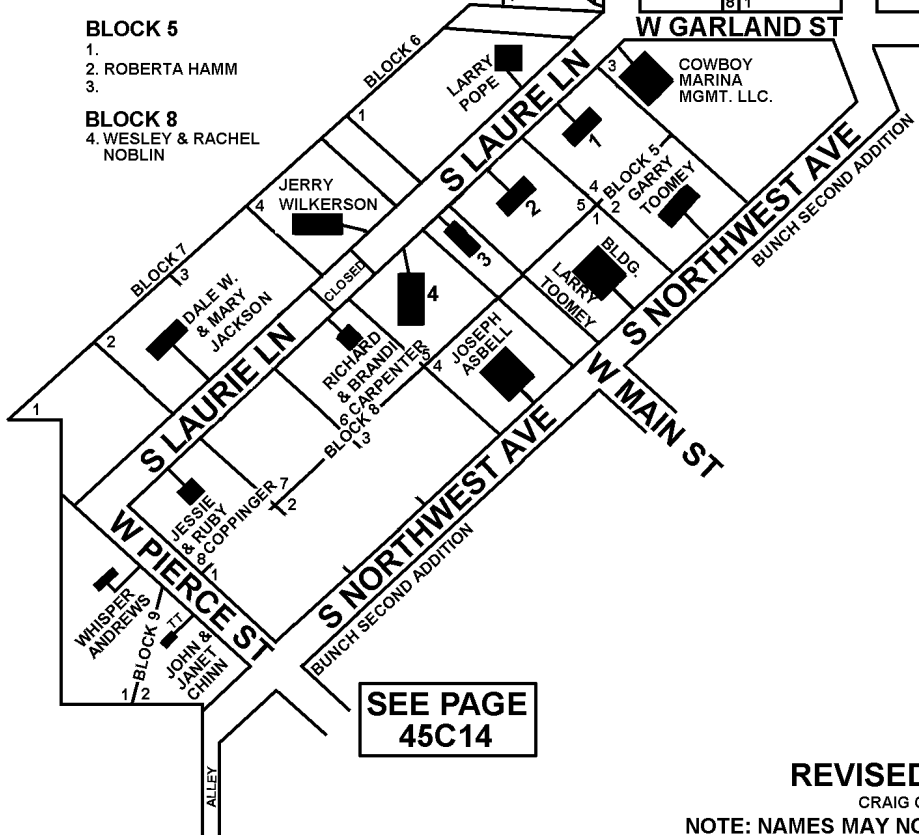
**W ALLEN ST**

**SEE PAGE  
 45C14**



- BLOCK 5**  
 1. ROBERTA HAMM  
 2. ROBERTA HAMM  
 3. ROBERTA HAMM
- BLOCK 8**  
 4. WESLEY & RACHEL NOBLIN

**SEE PAGE  
 45C14**



**SEE PAGE  
 45C14**

**9-22-2010**  
**REVISED 8-21-2019**

CRAIG COUNTY E-911

NOTE: NAMES MAY NOT BE CURRENT

**W HIGHWAY 85A**