

T25N - R22E

45C7

SECTIONS 23 & 26

DELAWARE COUNTY, OKLAHOMA

DELAWARE COUNTY
OKLAHOMA

SEE PAGE
45C5

SECOND LAKEVIEW ADDITION

BERNICE, OKLAHOMA

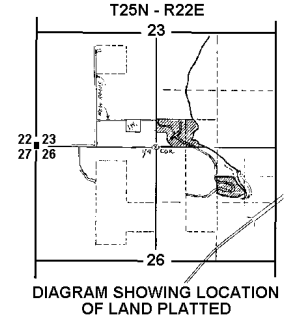
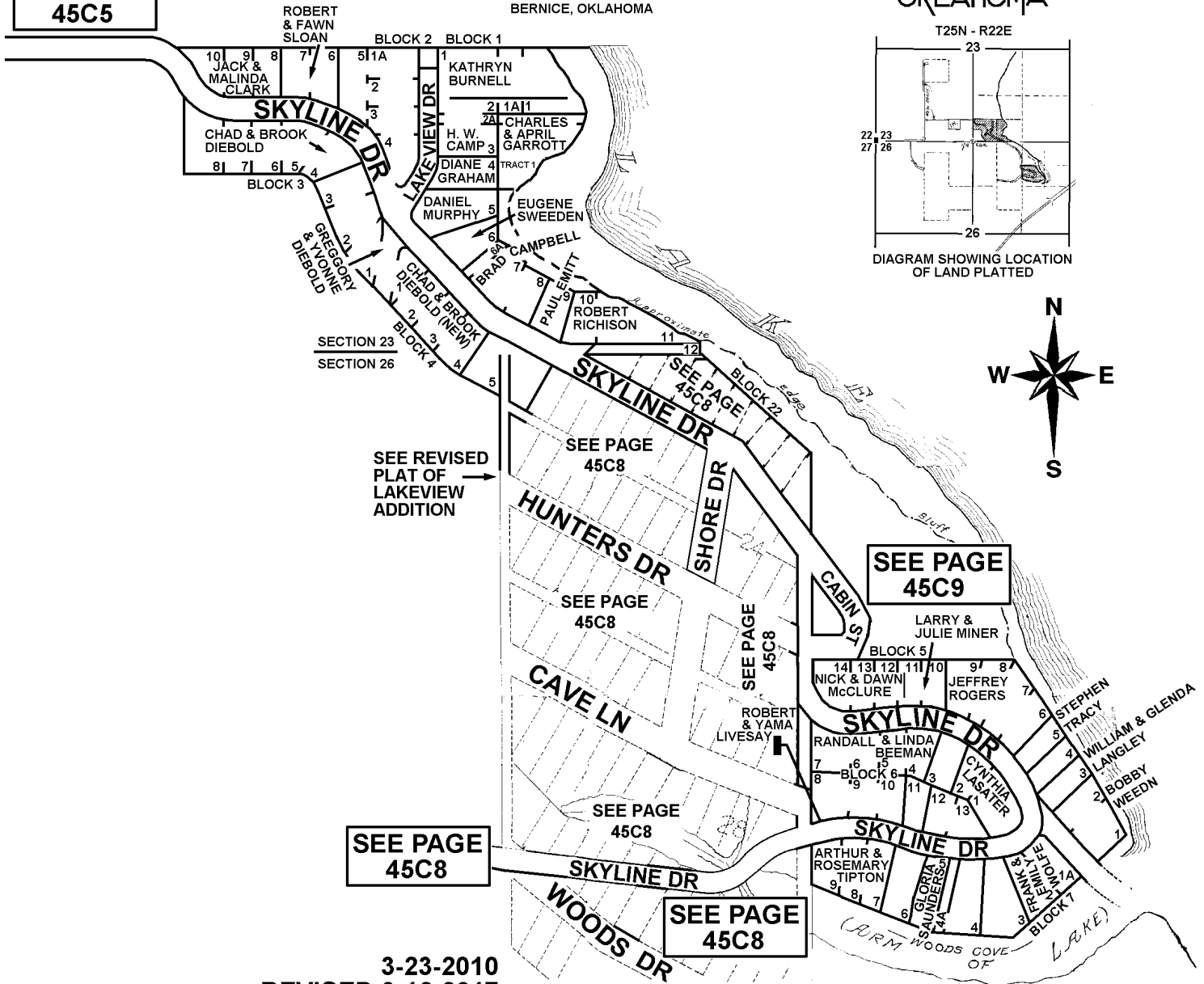


DIAGRAM SHOWING LOCATION
OF LAND PLATTED



SEE REVISED
PLAT OF
LAKEVIEW
ADDITION

SEE PAGE
45C8

SEE PAGE
45C8

SEE PAGE
45C9

3-23-2010
REVISED 9-12-2017

CRAIG COUNTY E-911

NOTE: NAMES MAY NOT BE CURRENT

BLOCK 6

- 3. GEORGE FRAZEE
- 12. & 13. LOUIE & LINDA STEVENS
- 8-10. MAUDETTE BLASE / DENNY VAN

BLOCK 7

- 3. SCOTT & TERRY DALTON
- 6. CHARLES & DEBRA BUTLER