

T24N - R22E

SECTION 28

DELAWARE COUNTY, OKLAHOMA

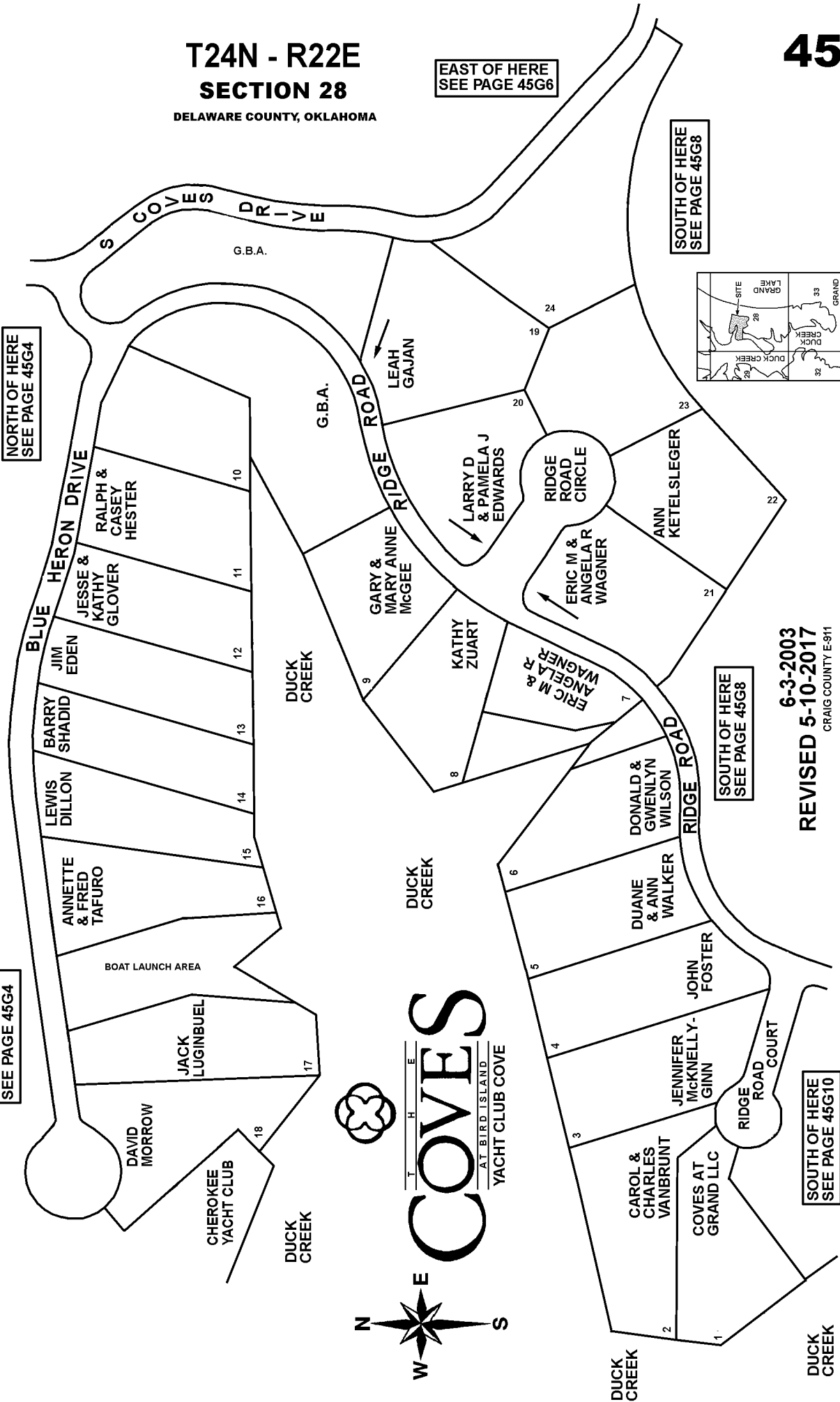
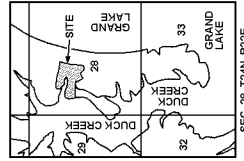
45G5

EAST OF HERE  
SEE PAGE 45G6

SOUTH OF HERE  
SEE PAGE 45G8

NORTH OF HERE  
SEE PAGE 45G4

NORTH OF HERE  
SEE PAGE 45G4



**THE COVES**  
AT BIRD ISLAND  
YACHT CLUB COVE

6-3-2003  
REVISED 5-10-2017  
CRAIG COUNTY E-911

SOUTH OF HERE  
SEE PAGE 45G10

NOTE: NAMES MAY NOT BE CURRENT